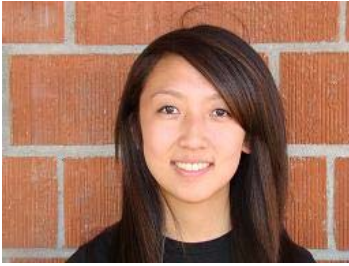


The Sound Board



The rookies had a very successful and memorable first time performance with the RWMA. To some, it was just another hot and sweaty day and for the Seniors, the 4th of July Parade was their last first performance of the season. We would like to thank our WIM Club President, Mrs. Greenup, for organizing and preparing the boosters at the park. Also, a big thank you to all our band parents who helped out at the parade, as well as those who “treaded the trail” with water bottles for us as we sweated under the hot summer heat. We would not have gotten this far without your help and support.

Summer band is finally over and both the rookies and vets are ready to move on to 8 days of progress. With band camp underway, the RWMA continues to work towards preparing for the field show. Many are excited to find out what the show is going to be this year. Meanwhile, the Alliance Council is working hard on their band camp skit, which they will present on the first day of band camp.

Please join us for the family potluck on Thursday, August 20 from 6-9pm. Your child and the RWMA will be performing what they have accomplished during the 8 days of band camp for you. Thank you for your help and support, and we hope to see you there!

Samantha Hong (Sr)
Co-President/Front Ensemble Section Leader



Hi, my name is Michael Hu and I am the new freshmen council member. I am very excited to be in the council and to be part of this wonderful band. Even though I have only been in the RWMA for a couple of weeks, I have already experienced some fun, memorable, and tiring activities. My favorite activity was the 4th of July parade. It was very tiring but I have always wanted to be in a parade.

One of the most tiring things to do in band is to march. At first, it may be hard and confusing to some because of the synchronization and also because you have to march and play at the same time. The band has spent countless hours practicing our marching technique and most of us have it mastered already. In my opinion, band is one of the most tiring things to do, but during performances, all that hard work will pay off. Marching band is one of my favorite things to do and I look forward to the actual field shows and performances we will face in the future.

Michael Hu (Fr)
Member At Large / Saxophone

President's Message

The signs are in the air that summer is coming to an end, days are getting shorter, evenings are getting cooler and band camp is in session. Such is the bittersweet end of another summer. We're anxiously looking forward to the new field show, while lamenting the end of the slower pace of summer.

The band looked and sounded great in the Hacienda Heights "I Love America" 4th of July parade. Mr. Chang and the other instructors do a great job of training the freshmen and getting the entire group to march as one in a short two week period. They looked sharp in their white visors and matching RWMA t-shirts. We had a successful concession at the park, in spite of the confusion created with new procedures thrown in at the last minute. The band made \$568.00, and the color guard made \$115.00, not bad for a hot day's work! Thank you to everyone who helped haul supplies to and from the park as well as everyone who made and sold the ever popular sno-cones and worked the concession. It was a good day for fellowship and making new friends. I want to thank everyone who donated ice and bottled water, and loaned us their ice chests. It was definitely a team effort and we couldn't have done it without everyone's help and support. I really appreciate it!

The first of two car washes was held on July 18, and I think we were busy from 8:00 – 2:00 with very little rest for the students washing cars. There will be another car wash August 22, from 8:00 – 2:00 at the Shepherd of the Valley Church at the corner of Park Lawn & Colima.

Thank you to everyone who turned out and ate frozen yogurt or gelato at the Whimsical fundraiser which ran the week of July 12 – 18. The band made \$150.00 – that's a lot of frozen yogurt!

Our next event will be the Family Potluck Dinner and Orientation Meeting. It will be held on Thursday night, August 20. The dinner will start at 6:00pm, followed by the orientation meeting. Rounding out the evening will be the first performance of this year's field show. A flyer will be sent home with more information on this event – including asking you to bring a certain type of dish for the dinner. Everyone always has a good time at this event. Your entire family is welcome to attend the dinner, meeting and performance. Mark August 20 on your calendar and plan to join us!

Our first performance this year will be a home football game on Friday, September 18th. For the game we will need parents to sell popcorn and sno-cones, help with the pit and move the percussion instruments on and off the field. It is a lot of fun and the more people we have, the easier it is for everyone. So, watch for emails with more information and another esign up as game day gets closer.

See you on the 20th,

Cindy Greenup—WIM Club President



Photos From The 4th Of July Parade





21st ANNUAL
GOLDEN STATE FIELD CLASSIC – “GSFC”
FIELD SHOW COMPETITION
It is that time of year – AGAIN!!!!



The most important fundraising event of the year for the WIM Club is the **“Golden State Field Classic (GSFC)”**. This year marks the twentieth year of this event and it will be held on Saturday, October 24th, at Glen A. Wilson Wildcat Stadium. The entire Royal Wilson Marching Alliance hosts this event. All students of the *RWMA* are expected to work the entire day and sell advertising space in the souvenir program. Parents are asked to work at least one, four hour shift and are encouraged to contact their employer and friends to solicit ads. The marching band and color guard depend on this fundraiser to make up the funding gap between the shared cost requirements and expected expenditures for the year. Everyone supports this event including the Wilson High School administrators, the Hacienda-La Puente District management and the HLPUSD Board of Education.

The GSFC is an adjudicated event; meaning official judges from the Southern California School Band & Orchestra Association are selected to evaluate each band’s performance of their field show. For the past twenty years, we have hosted a very successful tournament, thanks to the generous support of parents, students, alumni, friends, and community businesses. It is estimated that approximately 8,000 – 10,000 people attend our day long event. **Everyone must help by volunteering to work that day!**

The GSFC is organized on a committee system. Committee Chairpersons are volunteer parents from the band and color guard. Each committee chairperson needs volunteers to work shifts during the day.

This is a critical year for us. Many of the chairpersons from the last couple of years have “graduated”, and we need new parents to step forward and take these positions. The one good thing is that the past parents have left excellent written instructions on what needs to be done. The biggest responsibility is overseeing the volunteers and students working in that area on the day of the GSFC.

Look for more information regarding the Golden State Field Classic from your student, on the official RWMA website (www.TheRWMA.org), and in the next edition of the WIMsical Newsletter.

RWMA
Royal Wilson Marching Alliance



McDonald's Night

Support Wilson's Band & Color Guard

Mark your calendars because the RWMA will be hosting our 7th Annual McDonald's Night on Wednesday, October 7th from 4 - 8 pm at the McDonald restaurant on Stoner Creek and Colima.

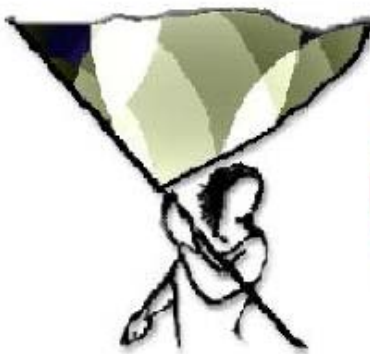
This is a special evening when the RWMA students and VIPS from Wilson High School will serve up french fries, wipe down your table, mix the parfaits and welcome you to McDonalds....which will "the happiest place" in Hacienda Heights on that night. =) because old and new friends, family and neighbors, RWMA current members and alumni will gather to eat, chat, and smile together while benefiting the RWMA.

Our VIPs are the staff: administration and teachers from WHS....come and see who may be selling you a cookie or frying up some french fries. This year we need to generate \$3,000.00 in sales order to receive a 20% donation. No fliers are needed, so invite everyone and let's "pack the house".

Donelle Murakami

Bring the whole family

Invite your friends



What is Shared Cost?

Why do we need to pay it?

Each student that is a member of the Royal Wilson Marching Alliance has a financial obligation for the year; known as "shared cost". These funds are necessary to pay for specialized instructors, vehicles to move equipment to each field show, competition and football game, entry fees for the competitions, new instruments and equipment for the *RWMA*, uniforms, repair and maintenance of existing instruments and equipment, and food for the students on the competition days, usually Saturday. The funds provided by the school district do not come close to covering all these expenses, especially for a group of 120 students. This year, we estimate that in addition to the shared costs we will collect, the WIM Club will have to raise approximately \$40,000 through fundraisers to meet all these expenses.

The shared cost obligation for the band members and the color guard are different. For each band member, the shared cost obligation of **\$325** is due Wednesday, August 13th, the first day of band camp. It can be paid as a lump sum or in three installments. If you choose to pay by installments, they are due on the following dates:

First Installment: Due: August 11th \$100

Second Installment: Due: October 1st \$100

Third Installment: Due: November 2nd \$125

The first installment is due the first day of band camp. Fundraising events are scheduled each month, beginning in band camp, to help the students earn their shared cost obligation. The WIM Club also has a scrip program. You can purchase scrip for many stores, restaurants, and other services in the area. A percentage of the face value of the scrip will go to your student's shared cost account. Purchasing scrip is a very easy and quick way to raise some of your shared cost obligation.

The Golden State Field Classic (GSFC) is the WIM Club's major fund raising event of the year. This single event brings in the most funds to offset the \$40,000 we need to raise. Everyone in the *RWMA* is responsible for selling advertisements for the GSFC Program. Your student received information on selling these ads during the second week of summer band. The selling of ads is underway and many students have already turned in some ads.

Finally, Mr. Chang is the administrator for all of the students' shared cost accounts. Any questions you may have about the balance in your account should be directed to him. If you have any financial constraints or questions, please bring the matter to Mr. Chang's attention immediately and he will work with you.

Be Connected and Be Involved~!

If you have not filled out this eNote form please so and turn it into Mr. Chang. Please fill out the form completely, and if your family does not have an email address please submit your student's email address. They can pass the information on to you. We hope this will help you stay informed about all of the RWMA activities.

Sincerely,
Cindy Greenup

To the parents/guardians of a RWMA member:

In anticipation of the upcoming season, we are putting together a phone tree and email group to better inform you of when we can use your assistance in supporting the RWMA. There will be various opportunities throughout the year. **YOUR participation** will mean much to your student. Let's show them our love and support!

Please provide us with the following information:

(circle one) **Band** **Color Guard**

Member's Name(s): _____ **Grade in the Fall:** _____

_____ **Grade in the Fall:** _____

Parent's/Guardian's Name(s): _____

Email Address: _____

Contact Phone #: _____

Preferred method of contact: _____

If you have any questions, please contact Cindy Greenup @ (626) 369-4019.

as of 7/6

July 2009

Sunday	Monday	Tuesday	Wednesday	Thursday	Friday	Saturday
			1 Summer School 1-3:30pm	2 Summer School 1-3:30pm Rehearsal 6-9pm	3	4 <i>Independence Day</i> <u>4th of July Parade</u>
5	6 Summer School 1-3:30pm Percussion Rehearsal 1:30-4:30pm	7 Summer School 1-3:30pm	8 Summer School 1-3:30pm Rehearsal 6-9pm Scrip Order placed	9 Percussion Rehearsal 6-9pm	10	11
12 Whimsical Fundraiser 11am-11pm	13 Whimsical Fundraiser 11am-11pm Summer School 1-3:30pm Percussion Rehearsal 1:30-4:30pm	14 Whimsical Fundraiser 11am-11pm Summer School 1-3:30pm Rehearsal 6-9pm	15 Whimsical Fundraiser 11am-11pm Summer School 1-3:30pm	16 Whimsical Fundraiser 11am-11pm Percussion Rehearsal 6-9pm	17 Whimsical Fundraiser 12pm-11pm	18 <u>Car Wash @ Shepherd of the Valley 8am-2pm</u> Whimsical Fundraiser 12pm-11pm
19	20 Percussion Rehearsal 1:30-4:30pm	21 CG Rehearsal 1:30-4:30pm Percussion Rehearsal 1:30-4:30pm	22 Percussion Rehearsal 1:30-4:30pm	23 CG Rehearsal 1:30-4:30pm	24	25
26	27	28 CG Rehearsal 1:30-4:30pm	29	30 CG Rehearsal 1:30-4:30pm	31	

August 2009

Sunday	Monday	Tuesday	Wednesday	Thursday	Friday	Saturday
						1
2	3	4	5	6	7	8
9	10	11 Band Camp 12-4pm Band Camp 5-9pm 1st Band Shared Cost Payment Due	12 Band Camp 12-4pm Band Camp 5-9pm Scrip Order placed	13 Band Camp 12-4pm Band Camp 5-9pm	14 Band Camp 12-4pm Band Camp 5-9pm	15
16	17 Band Camp 12-4pm Band Camp 5-9pm	18 Band Camp 12-4pm Band Camp 5-9pm	19 Band Camp 12-4pm Band Camp 5-9pm	20 Band Camp 12-4pm Band Camp 5-9pm Family Potluck 6-9pm	21	22
23	24	25	26 <i>First Day of School</i>	27 CG Rehearsal 5-9pm Band Rehearsal 6-9pm	28	29 Rehearsal 9-12pm Rehearsal 1-5pm
30	31					

September 2009

Sunday	Monday	Tuesday	Wednesday	Thursday	Friday	Saturday
		1	2 Scrip Order placed	3	4	5 Rehearsal 9-12pm Rehearsal 1-5pm
6	7 <i>Labor Day</i> <i>School Holiday</i>	8 CG Rehearsal 5-9pm Band Rehearsal 6-9pm	9	10 CG Rehearsal 5-9pm Band Rehearsal 6-9pm	11 Away FB v Sonora	12
13	14 WIM Club General Meeting 7pm	15 CG Rehearsal 5-9pm Band Rehearsal 6-9pm	16 Scrip Order placed	17 CG Rehearsal 5-9pm Band Rehearsal 6-9pm	18 <u>Home Football</u> <u>v John Glenn 7pm</u>	19 <u>Picture Day 9-12pm</u> Rehearsal 1-5pm
20	21	22 CG Rehearsal 5-9pm Band Rehearsal 6-9pm	23	24 CG Rehearsal 5-9pm Band Rehearsal 6-9pm	25 Away FB v Schurr	26 Rehearsal 9-12pm Rehearsal 1-5pm
27	28	29 CG Rehearsal 5-9pm Band Rehearsal 6-9pm	30			

October 2009

Sunday	Monday	Tuesday	Wednesday	Thursday	Friday	Saturday
				1 CG Rehearsal 5-9pm Band Rehearsal 6-9pm	2 <u>8th Grade Night</u> <u>Home Football</u> <u>v Blair 7pm</u>	3
4	5	6 CG Rehearsal 5-9pm Band Rehearsal 6-9pm	7 Scrip Order placed	8 CG Rehearsal 5-9pm Band Rehearsal 6-9pm	9 <u>Homecoming</u> <u>v Covna 7pm</u>	10 <u>Homecoming Dance</u>
11	12	13 CG Rehearsal 5-9pm Band Rehearsal 6-9pm	14	15 CG Rehearsal 5-9pm Band Rehearsal 6-9pm	16 <u>Home Football</u> <u>v Los Altos 7pm</u>	17 <u>Rowland Field Show</u> <u>Tournament</u>
18	19	20 CG Rehearsal 5-9pm Band Rehearsal 6-9pm	21 Scrip Order placed	22 CG Rehearsal 5-9pm Band Rehearsal 6-9pm	23 Away FB v Rowland	24 <u>Golden State Field Classic</u>
25	26	27 CG Rehearsal 5-9pm Band Rehearsal 6-9pm	28	29 CG Rehearsal 5-9pm Band Rehearsal 6-9pm	30 <u>Home Football</u> <u>v Charter Oak 7pm</u>	31

RWMA / WIM CLUB SCRIP ORDER FORM

last updated 5/27/09

Student's Name _____ Date _____ Total amount enclosed: Check \$ _____ / Cash \$ _____

Numbers in parenthesis are cash denominations of the certificates. Percentages are the credit we receive that go directly to a student's account. Scrip is subject to availability and change by the Great Lakes Scrip Center. Please make checks payable to WIM CLUB.

Restaurants & Food

Acapulco (\$25) 9%	\$
Applebee's (\$25, 50) 8%	\$
Arby's (\$10) 8%	\$
Auntie Anne's (\$10) 8%	\$
Bahama Breeze (\$25) 9%	\$
Baja Fresh (\$25) 7%	\$
Baskin Robbins (\$2) 9%	\$
Blue Coral Seafood & Spirits (\$25) 5%	\$
Boston Market (\$10) 12%	\$
Bruegger's Bagels (\$10) 5%	\$
Buca di Beppo (\$25) 8%	\$
Burger King (\$10) 4%	\$
California Pizza Kitchen (\$10) 4%	\$
Carl's Jr. (\$10) 9%	\$
Carrows (\$10) 8%	\$
Champps Americana (\$25) 5%	\$
Chart House (\$25) 9%	\$
Cheeseburger in Paradise (\$25) 5%	\$
Cheesecake Factory (\$25) 5%	\$
Chevy's (\$25) 8%	\$
Chili's (\$25) 11%	\$
Chipotle Mexican Grill (\$10) 10%	\$
Chuck E. Cheese (\$10) 8%	\$
Claim Jumper (\$25) 8%	\$
Coco's (\$10) 8%	\$
Coffee Bean & Tea Leaf (\$25) 9%	\$
Cold Stone Creamery (\$10) 8%	\$
Dave & Buster's (\$25) 13%	\$
Del Taco (\$10) 4%	\$
Denny's (\$10) 7%	\$
Domino's Pizza (\$5) 5%	\$
Dream Dinners (\$75) 8%	\$
Dunkin Donuts (\$10) 4%	\$
El Pollo Loco (\$10) 6%	\$
El Torito (\$25) 9%	\$
El Torito Grill (\$25) 9%	\$
Fazoli's (\$25) 7%	\$
Fleming's Steakhouse (\$25) 5%	\$
Hard Rock Café (\$25) 10%	\$
Hometown Buffet (\$25) 5%	\$
Honeybaked Ham (\$10) 12%	\$
Islands Restaurant (\$25) 8%	\$
Jack in the Box (\$10) 4%	\$
Jamba Juice (\$10) 7%	\$
KFC (\$5) 9%	\$
Krispy Kreme <i>spot card</i> (\$10) 50%	\$
Little Caesar's (\$20) 8%	\$
Long John Silver's (\$5) 8%	\$
Macaroni Grill (\$25) 11%	\$
Maggiano's Little Italy (\$25) 11%	\$
Marie Callender's (\$25) 18%	\$
Mimis Café (\$25) 8%	\$
Olive Garden (\$25) 9%	\$
On The Border (\$25) 11%	\$
Outback Steakhouse (\$25) 5%	\$
P. F. Chang's (\$25) 7%	\$
Panera Bread (\$10) 9%	\$
Papa John's Pizza (\$10) 8%	\$
Peet's Coffee & Tea (\$20) 8%	\$
Pei Wei Asian Diner (\$25) 7%	\$
Pick Up Stix (\$25) 12%	\$
Pizza Hut (\$10) 8%	\$
Rainforest Café (\$25) 9%	\$
Red Lobster (\$25) 9%	\$
Red Robin (\$25) 9%	\$
Rock Bottom (\$25) 8%	\$
Rocky Mtn Chocolate Factory (\$10) 11%	\$
Roy's (\$25) 5%	\$
Ruby Tuesday (\$25) 8%	\$
Ruth's Chris Steakhouse (\$50) 10%	\$
See's Candies (\$15/lb) 25%	\$
Souplantation (\$25) 8%	\$
Starbucks Coffee Card (\$10, 25) 7%	\$
Subway (\$10, 50) 3%	\$
TGI Friday's (\$25) 10%	\$
Wendy's (\$10) 4%	\$

Drug Stores

CVS Pharmacy (\$25, 100) 6%	\$
GNC (\$25) 8%	\$
Longs Drug (\$25, 100) 5%	\$
Rite Aid (\$25) 4%	\$
Walgreen's (\$25, 100) 6%	\$

Department Stores

Great Indoors (\$25, 50, 100, 250) 4%	\$
JC Penney (\$25, 100) 5%	\$
K Mart (\$25, 50) 4%	\$
Kohl's (\$25, 100) 4%	\$
Macy's (\$25, 100) 10%	\$

Entertainment

AMC (\$25) 7%	\$
AMC Single Admission (\$9.50) 16%	\$
Blockbuster Video <i>gift card</i> (\$10) 7%	\$
Blockbuster <i>single use movie</i> (\$3.79) 15%	\$
Blockbuster <i>single game</i> (\$6) 15%	\$
Blockbuster Night Card (\$12) 15%	\$
Cineplex Odeon (\$25) 7%	\$
Cineplex Odeon <i>single use</i> (\$9.50) 16%	\$
Edwards Theaters (\$25) 8%	\$
Edwards Theaters <i>single use</i> (\$9) 16%	\$
Hollywood Video (\$10) 16%	\$
iTunes (\$15) 4%	\$
Loews Theaters (\$25) 7%	\$
Loews Theaters <i>single use</i> (\$9.50) 16%	\$
Regal Theaters (\$25) 8%	\$
Regal Theaters <i>single ticket</i> (\$9) 16%	\$
United Artists Theaters (\$25) 8%	\$
United Artists Theaters <i>single use</i> (\$9) 16%	\$

Gasoline & Automotive

Arco <i>gas only</i> (\$50, 100) 2%	\$
Arco <i>gas only</i> (\$250) 3%	\$
Auto Zone (\$25) 5%	\$
Chevron (\$50, 100) 2%	\$
Chevron (\$250) 3%	\$
Circle K (\$25) 2%	\$
Exxon/Mobil (\$50) 1.5%	\$
Exxon/Mobil (\$250) 2%	\$
Kragen Auto Parts (\$25) 8%	\$
Jiffy Lube (\$30) 8%	\$
Pep Boys (\$20) 4%	\$
Shell card (\$25, 50, 100) 1.5%	\$
Texaco (\$25) 2%	\$

Grocery Stores

Albertson's (\$25, 100) 4%	\$
Centennial Market (\$20) 5% - <i>ftd supply</i>	\$
Safeway (\$25, 100) 4%	\$
Smart & Final (\$25, 50, 100) 3%	\$
Stater Brothers (\$25, 100) 5%	\$
Pavillions (\$25, 100) 4%	\$
Vons (\$25, 100) 4%	\$

Hardware & Home Repair

Ace Hardware (\$25, 100) 4%	\$
Home Depot (\$25, 100, 500) 4%	\$
Lowe's (\$25, 100, 500, 1000) 4%	\$

Specialty Stores

1-800-FLOWERS (\$25) 10%	\$
American Eagle Outfitters (\$25) 9%	\$
AT&T 125 minute phone card (\$9.50) 20%	\$
Amazon.com (\$25, 100) 4%	\$
B Dalton (\$10, 25, 100) 9%	\$
Banana Republic (\$25) 9%	\$
Barnes & Noble (\$10, 25, 100) 9%	\$
Bass Pro Shops (\$25, 100) 9%	\$
Bath & Body Works (\$10, 25) 13%	\$
Bed Bath & Beyond (\$25) 7%	\$
Best Buy (\$25, 100, 250) 3%	\$
Big 5 (\$25) 8%	\$
Borders (\$10, 25) 9%	\$
Brookstone (\$25) 12%	\$

Specialty Stores cont.

Build-A-Bear Workshop (\$25) 8%	\$
Catherines Plus (\$25) 6%	\$
Circuit City (\$25, 100) 3%	\$
Claire's (\$10) 9%	\$
Crate and Barrel (\$25, 100) 8%	\$
The Container Store (\$25) 9%	\$
Disney Gift Card (\$25, 100, 1000) 2%	\$
Dress Barn (\$25) 8%	\$
Eddie Bauer (\$25) 9%	\$
Express (\$25) 13%	\$
Family Christian Stores (\$25) 8%	\$
Fashion Bug (\$25) 6%	\$
Foot Locker (\$25) 9%	\$
GameStop (\$25) 3%	\$
Gap/Baby Gap/Gap Kids (\$25) 9%	\$
Golfsmith (\$25) 8%	\$
Great Clips (\$25) 8%	\$
Gymboree (\$25) 13%	\$
Hallmark (\$25) 4%	\$
Harry & David (\$25) 10%	\$
J. Crew (\$25) 13%	\$
J. Jill (\$25) 11%	\$
Jo-Ann Fabrics (\$20) 6%	\$
Kay Jewelers (\$50) 6% <i>cannot be used for acct pymts</i>	\$
Kids Foot Locker (\$25) 9%	\$
L.L. Bean (\$25, 100) 15%	\$
Lady Foot Locker (\$25) 9%	\$
Lands' End (\$25, 100) 9%	\$
Lane Bryant (\$25) 6%	\$
Limited (\$25) 9%	\$
Marshalls (\$25, 100) 7%	\$
Men's Wearhouse (\$25) 8%	\$
Michael's (\$25) 4%	\$
Office Depot (\$25, 100) 4%	\$
Office Max (\$25) 5%	\$
Old Navy (\$25) 9%	\$
Omaha Steaks (\$25) 9%	\$
Payless Shoe Source (\$20) 13%	\$
Pier 1 Imports (\$25) 9%	\$
Pottery Barn (\$25, 100) 8%	\$
Pottery Barn (\$25, 100) 8%	\$
Radio Shack (\$25) 4%	\$
Regis Salon (\$25) 8%	\$
REI (\$25) 8%	\$
Restoration Hardware (\$25, 100) 12%	\$
Ross Dress for Less (\$25) 8%	\$
Sally Beauty (\$25) 12%	\$
Sam's Club (\$25, 100, 250) 2%	\$
Sephora (\$20) 4%	\$
Spa Finder (\$25) 8%	\$
Sports Authority (\$25, 100) 8%	\$
Staples (\$25, 100) 5%	\$
Suncoast Video (\$10) 6%	\$
Sunglass Hut (\$25) 12%	\$
Tanger Outlets (\$25) 8% - <i>use within 1 yr</i>	\$
T.J. Maxx (\$25, 100) 7%	\$
Toys/Kids/Babies 'R' Us (\$20) 1.5%	\$
Ulta (\$25) 4%	\$
Waldenbooks (\$10, 25) 9%	\$
Wal Mart (\$25, 100, 250) 2%	\$
White Barn Candle (\$10, 25) 13%	\$
Williams-Sonoma (\$25, 100) 8% <i>no online</i>	\$

Travel

American Airlines (\$50, 100, 250) 8%	\$
Avis Rent A Car (\$50) 8%	\$
Best Western (\$25, 100) 12%	\$
Budget Rent A Car (\$50) 8%	\$
Carnival Cruise (\$100) 8%	\$
Clanton/Comfort Inn (\$25, 100) 6%	\$
Courtyard (\$50, 100, 500) 12%	\$
Fairfield Inn (\$50, 100, 500) 8%	\$
Fairmont Hotels (\$100) 12%	\$
Hyatt Hotels (\$25, 50, 100) 9%	\$
Marriott (\$50, 100, 500) 8%	\$
Renaissance Hotels (\$50, 100, 500) 12%	\$
Ritz Carlton (\$50) 8%	\$

Added: Little Caesar's • Hallmark • J. Jill / Dropped: Black Angus • Ritz Camera
 Contribution Change: Best Buy (3%) • Marriott Hotels (8%) / Changed Denomination - Souplantation (now \$25 gift cards)
 Other: Blockbuster Night Card = 2 movie rentals, 2-liter of Coke & tub of popcorn

Key: "filled" - scrip order filled • "back order" - scrip to be received at later time • "temporarily unavailable" - the scrip order was not able to be placed, but it has not been dropped from the program, attempts to place the order will be made in subsequent orders unless a refund or replacement order is requested.