



Wilson Instrumental Music Club, Inc.

WIMsical Notes

<http://www.TheRWMA.org>

Band Room
Phone Number
(626) 934-4572

Parent Volunteer
Phone Number
(626) 771-9505

Volume XLIII, Issue 4

February 2010

Upcoming Events:

Family Feast—March 12

CG Tournaments

March 6—Huntington Beach

March 13—Saugus

April 2—Marina

April 17—Championships@

Etiwanda H.S.

Percussion Ensemble

March 13—Aliso Viejo

Jazz Band

March 20—La Sierra

Inside this issue:

Sound Board	2
President's Message	3
Family Feast	4
Calendar for February & March	5
Calendar for April & May	6
Scrip Order Form	7
Band Room Wish List	8



Director's Take

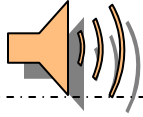
Greetings! 2009 ended with yet another successful marching season!

The RWMA continues to excel on the field as we easily qualified for the SCSBOA Field Championships for the fifth consecutive year. I would like to thank everyone who has supported us throughout the season, whether it was behind the scenes as a volunteer or in the stands cheering us on. This includes the RWMA family that has "graduated" over the years. The longer I am the director of the RWMA, the more impressed I am by the number of alumni students and parents that come back to lend a helping hand and cheer us on from the stands.

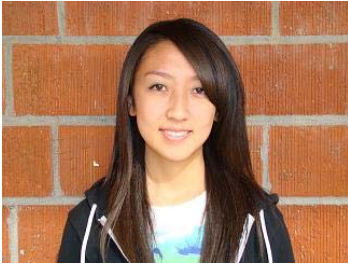
Now that marching season is over, we have many of our smaller ensembles rehearsing for second semester performances. The Jazz Band is now playing at home varsity basketball games and preparing for jazz festivals. The Concert Band and Wind Ensemble are preparing music for the District Festival that will be held at Los Altos High School on March 31. Preparation by the Winter Guard for their competitive season is well under way. And a newly formed Percussion Ensemble has begun rehearsals to perform at one competition and a festival. I hope everyone has the opportunity to come out and support all our groups as they perform throughout the semester.

Beyond performance, we are keeping busy with our fundraising efforts, as well. Our Family Feast Spaghetti Dinner and Silent Auction is coming up soon. We hope to raise much more than in the past to help make up for the Golden State Field Classic that fell short of expectations. If you have any donations that we can use for either the auction or as a raffle prize, please send them in. Also, please make plans to attend our dinner. Even if you don't spend a dime on the auction or raffle, the company and fellowship is well worth the price of admission!

Jonathan Chang
Director

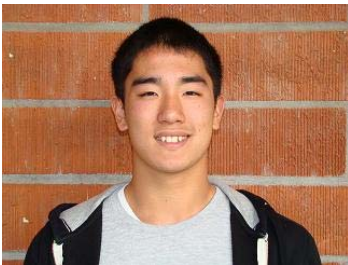


The Sound Board



As the climax of marching season has passed us by in the blink of an eye and the end of the year quietly approaches, a new and exciting season has come for the spring percussion. Auditions took place in January and we are now preparing for our first competition on March 13th at Aliso Niguel HS. Unlike previous years, the percussion ensemble is competing in the SCPA (Southern California Percussion Alliance) circuit in the standstill division this season. We are also performing at several festivals. In addition, this year we are hosting weekly percussion clinics for anyone in band who is interested in becoming a better percussionist. Aside from the percussion ensemble and clinics, this is our second year bringing back our Mallet Ensemble, the advanced mallet line that will compete and perform at festivals. Through the continuation of weekly rehearsals and sectionals, hard work and dedication, we are well on our way for upcoming performances.

Samantha Hong (Sr), President & Percussion Section Leader



Hey Everyone! - Marching season was great and we had a very successful and enjoyable field season. I am very proud of how well the band did at championships and the big stride we took towards the end to finish strong. Our 8th place finish was a victory for us because of all the hard competition we faced. The transition from marching season to concert season is bittersweet with the sad thought of all the fun we had on the field is now coming to an end, but the fun for concert season is just about to start! Our three different groups; the jazz band, wind ensemble, and concert band which if you were at the Christmas concert you got a taste of, all have great reputations and expectations from all the awards and great ratings from previous years. Also Colorguard will be going into winterguard which is always a fun and exciting show to watch. So watch out for all the bands and guard because I feel another very successful and amazing second semester coming up!

PS. Thank you for all the people that helped out during first semester because we would not have been able to do as much as we did without you! =)

David Moon (Sr), Drum Major & Saxophone Section Leader



Hello everyone, first semester along with marching season has come to an end. I had a lot of fun and I believe we all did a very good job. Winter Concert was a great success for the Color Guard; we caught all our rifle tosses and received a lot of applause. I'm exceptionally proud of everyone and the success that was achieved during the first semester of this year and as that reaches its conclusion, we begin Second Semester where the Color Guard prepares for its Winter Guard season.

Winter Guard is much more advanced compared to field season, members are taught higher levels of choreography and practice becomes a bit more intense. The song selected this year for our Winter Guard show, is a song by Dave Matthews, titled "You and Me". Our theme will revolve around a New York City mood, where members try to emphasize the idea of working together, thus the title of the song, "You and Me" We are making really good progress. We have most of our staging complete, and I have to say that I'm really excited about this Winter Guard show. Everyone is working really hard and I know we'll have a prosperous season.

Karen Omelas (Jr), Color Guard Lieutenant

President's Message



Happy New Year! Now that we're on our way into February, I hope everyone had a chance to rest & recover over the holidays, and that 2010 has started out on a good note.

The pace is slower for the band for the second semester, but not completely quiet. The Jazz Band has been busy playing at the home Basketball games, Color Guard is getting ready for their Winter competitions, and the Percussion and Mallet Ensembles are putting the finishing touches on their groups. The Concert Band and Wind Ensemble are preparing for the District Festival in March. So, while we may not be busy every weekend, we have lots of activities to keep us busy.

Speaking of activities, mark your calendar for March 12, 2010 for the 9th Annual Family Feast, to be held at the Willow Adult Center. This event always proves to be a fun filled evening with something for the entire family. We are in the process of procuring items to auction and raffle off, so watch for more information.

It is also time to start planning for the Annual Awards Banquet. If you have any ideas, or would like to work on that, let me know.

Cindy Greenup
WIM Club President

Nominations for 2010-2011

We're now accepting nominations for the WIM Club Board for 2010-2011. The board's job is to support the activities of the RWMA, and as such, parent participation is key to the success of our children in the RWMA.

If you are interested in serving on the board or would like more information, contact Mr. Chang, Cindy Greenup, or Marilou Li.

RWMA Silent Auction Dinner

Friday March 13, 2009

Tickets are \$10 and can be purchased from
Mr. Chang. **Get your tickets ASAP!**
The **Deadline is Monday, March 9th**

Encourage Your Section, Friends, and Family Members to Purchase Family Feast Tickets!!!

The Section with the **Most Ticket Sales**
Will be Rewarded with Section Points!

Dinner is included with purchase of ticket.
Various Prizes will be available for the Silent
and Live Auction.

Ticket Request Form

9th Annual Family Feast
Spaghetti Dinner, Silent Auction & Raffle

Friday, March 12, 2010

Name _____

Phone _____

of tickets _____ x \$10 = \$ _____

February 2010

Sunday	Monday	Tuesday	Wednesday	Thursday	Friday	Saturday
	1 Wind Ensemble 6-7pm WIM General Meeting 7pm	2 CG Rehearsal 5-9pm Percussion Rehearsal 5-8pm Mallet Ensemble 8-9pm	3 Scrip Order placed <u>Jazz Band @ Home Bball</u> Percussion Ensemble Rehearsal 3:30-6pm Mallet Ensemble 6-7pm	4 CG Rehearsal 5-9pm	5	6
7	8 <i>School Holiday</i>	9 CG Rehearsal 5-9pm <u>Jazz Band @ Home Bball v Bonita</u> Perc Rehearsal 5-8pm Mallet Ensemble 8-9pm	10 Percussion Ensemble Rehearsal 3:30-6pm Mallet Ensemble 6-7pm	11 CG Rehearsal 5-9pm <u>Jazz Band @ Home Bball v Diamond Ranch</u>	12	13
14	15 <i>President's Day School Holiday</i>	16 CG Rehearsal 5-9pm Percussion Rehearsal 5-8pm Mallet Ensemble 8-9pm	17 Scrip Order placed Percussion Ensemble Rehearsal 3:30-6pm Mallet Ensemble 6-7pm	18 CG Rehearsal 5-9pm	19 <u>Color Guard @ Chino (Independent Show)</u>	20
21	22 Wind Ensemble 6-8pm	23 Chamber Music 3-5pm CG Rehearsal 5-9pm Percussion Rehearsal 5-8pm Mallet Ensemble 8-9pm	24 Percussion Ensemble Rehearsal 3:30-6pm Mallet Ensemble 6-7pm	25 CG Rehearsal 5-9pm	26	27
28						

March 2010

Sunday	Monday	Tuesday	Wednesday	Thursday	Friday	Saturday
	1 Wind Ensemble 6-7pm WIM General Meeting 7pm	2 Chamber Music 3-5pm CG Rehearsal 5-9pm Percussion Rehearsal 5-8pm Mallet Ensemble 8-9pm	3 Scrip Order placed Percussion Ensemble Rehearsal 3:30-6pm Mallet Ensemble 6-7pm	4 CG Rehearsal 5-9pm	5	6 <u>Color Guard @ Huntington Beach</u>
7	8 Wind Ensemble 6-8pm	9 Chamber Music 3-5pm CG Rehearsal 5-9pm Percussion Rehearsal 5-8pm Mallet Ensemble 8-9pm	10 Concert Band/ Ensemble Rehearsal 6-9pm	11 CG Rehearsal 5-9pm	12 Family Feast Silent Auction & Spaghetti Dinner @ Willow Adult School	13 <u>Color Guard @ Saugus</u> <u>Percussion Ensemble @ Aliso Niguel</u>
14 <i>Daylight Savings begins</i>	15 <u>Pre-Festival Concert 7pm</u>	16 Chamber Music 3-5pm CG Rehearsal 5-9pm Percussion Rehearsal 5-8pm Mallet Ensemble 8-9pm	17 Scrip Order placed Percussion Ensemble Rehearsal 3:30-6pm Mallet Ensemble 6-7pm	18 CG Rehearsal 5-9pm	19	20
21	22 Wind Ensemble 6-7pm WIM Club Board Meeting 7pm	23 Chamber Music 3-5pm CG Rehearsal 5-9pm Percussion Rehearsal 5-8pm Mallet Ensemble 8-9pm	24 Percussion Ensemble Rehearsal 3:30-6pm Wind Ensemble 6-8pm	25 CG Rehearsal 5-9pm	26 <u>Color Guard @ Kaiser</u>	27
28	29 Concert Band/Wind Ensemble Rehearsal 6-9pm	30 Chamber Music 3-5pm CG Rehearsal 5-9pm Percussion Rehearsal 5-8pm Mallet Ensemble 8-9pm	31 <u>District Festival @ Los Altos</u>			

April 2010

Sunday	Monday	Tuesday	Wednesday	Thursday	Friday	Saturday
				1 CG Rehearsal 5-9pm	2 <i>Good Friday</i> Color Guard @ Marina	3
4 <i>Easter</i>	5 <i>Spring Break begins</i>	6	7	8	9 <i>Spring Break ends</i>	10
11	12 WIM Club General Meeting 7pm	13 Chamber Music 3-5pm CG Rehearsal 5-9pm Percussion Rehearsal 5-8pm Mallet Ensemble 8-9pm	14 Scrip Order placed Percussion Ensemble Rehearsal 3:30-6pm Mallet Ensemble 6-7pm	15 <i>Taxes Due</i> CG Rehearsal 5-9pm	16	17 Color Guard @ WGASC Championships at Etowanda HS
18 Color Guard @ WGASC Championships at Rancho Cucamonga HS	19	20 Chamber Music 3-5pm Percussion Rehearsal 5-8pm Mallet Ensemble 8-9pm	21 Percussion Ensemble Rehearsal 3:30-6pm Mallet Ensemble 6-7pm	22 Chamber Music Recital Recital 7pm	23	24
25	26	27 Percussion Rehearsal 5-8pm Mallet Ensemble 8-9pm	28 Percussion Ensemble Rehearsal 3:30-6pm Mallet Ensemble 6-7pm	29	30	

May 2010

Sunday	Monday	Tuesday	Wednesday	Thursday	Friday	Saturday
						1 Jazz Band @ Mt SAC
2	3 Color Guard Tryout Workshop 5-7pm WIM Club General Meeting 7pm	4 Color Guard Tryout Workshop 5-7pm Percussion Rehearsal 5-8pm	5 Color Guard Tryout Workshop 5-7pm Percussion Ensemble Rehearsal 3:30-6pm Mallet Ensemble 6-7pm	6 Color Guard Tryouts 5pm	7 Spring Finale 7pm	8
9 <i>Mother's Day</i>	10	11 Percussion Rehearsal 5-8pm	12 Percussion Ensemble Rehearsal 3:30-6pm Mallet Ensemble 6-7pm	13	14 Spring Concert 7pm	15 Percussion Ensemble @ Orange Lutheran
16	17 WIM Club Board Meeting 7pm	18 Jazz Concert 7pm Little Theater	19	20	21 Awards Banquet @ Whittier Radisson 6:30pm	22
23	24	25	26 Area Concert 7pm	27	28	29
30	31					

RWMA / WIM CLUB SCRIP ORDER FORM

last updated 1/21/10

Student's Name _____ Date _____ Total amount enclosed: Check \$ _____ / Cash \$ _____

Numbers in parenthesis are cash denominations of the certificates. Percentages are the credit we receive that go directly to a student's account. Scrip is subject to availability and change by the Great Lakes Scrip Center. Please make checks payable to WIM CLUB.

Restaurants & Food

Acapulco (\$25) 9%	\$
Applebee's (\$25, 50) 8%	\$
Arby's (\$10) 8%	\$
Bahama Breeze (\$25) 9%	\$
Baja Fresh (\$25) 7%	\$
Baskin Robbins (\$2) 9%	\$
Blue Coral Seafood & Spirits (\$25) 5%	\$
Boston Market (\$10) 12%	\$
Bruegger's Bagels (\$10) 5%	\$
Buca di Beppo (\$25) 8%	\$
Burger King (\$10) 4%	\$
California Pizza Kitchen (\$10) 4%	\$
Carl's Jr. (\$10) 9%	\$
Carrows (\$10) 8%	\$
Champps Americana (\$25) 5%	\$
Chart House (\$25, 100) 9%	\$
Cheeseburger in Paradise (\$25) 5%	\$
Cheesecake Factory (\$25) 5%	\$
Chevy's (\$25) 8%	\$
Chili's (\$25) 11%	\$
Chipotle Mexican Grill (\$10) 10%	\$
Chuck E. Cheese (\$10) 8%	\$
Claim Jumper (\$25) 8%	\$
Coco's (\$10) 8%	\$
Coffee Bean & Tea Leaf (\$25) 9%	\$
Cold Stone Creamery (\$10) 8%	\$
Dave & Buster's (\$25) 13%	\$
Del Taco (\$10) 4%	\$
Denny's (\$10) 7%	\$
Domino's Pizza (\$10) 5%	\$
Dream Dinners (\$75) 8%	\$
Dunkin Donuts (\$10) 4%	\$
El Pollo Loco (\$10) 6%	\$
El Torito (\$25) 9%	\$
El Torito Grill (\$25) 9%	\$
Fazoli's (\$25) 7%	\$
Fleming's Steakhouse (\$25) 5%	\$
Hard Rock Cafe (\$25) 10%	\$
Hometown Buffet (\$25) 5%	\$
Honeybaked Ham (\$10) 12%	\$
Islands Restaurant (\$25) 8%	\$
Jack in the Box (\$10) 4%	\$
Jamba Juice (\$10) 7%	\$
KFC (\$5) 8%	\$
Krispy Kreme spot card (\$10) 50%	\$
Little Caesar's (\$20) 8%	\$
Long John Silver's (\$5) 8%	\$
Macaroni Grill (\$25) 11%	\$
Maggiano's Little Italy (\$25) 11%	\$
Marie Callender's (\$25) 18%	\$
Mimis Cafe (\$25) 8%	\$
Olive Garden (\$25) 9%	\$
On The Border (\$25) 11%	\$
Outback Steakhouse (\$25) 8%	\$
P. F. Chang's (\$25) 8%	\$
Panera Bread (\$10, 25) 9%	\$
Papa John's Pizza (\$10) 8%	\$
Peet's Coffee & Tea (\$20) 8%	\$
Pei Wei Asian Diner (\$25) 7%	\$
Pick Up Stix (\$25) 12%	\$
Pinkberry (\$10) 5%	\$
Pizza Hut (\$10) 8%	\$
Rainforest Cafe (\$25, 100) 9%	\$
Red Lobster (\$25) 9%	\$
Red Robin (\$25) 9%	\$
Rock Bottom (\$25) 6%	\$
Rocky Mtn Chocolate Factory (\$10) 11%	\$
Roy's (\$25) 5%	\$
Ruby Tuesday (\$25) 8%	\$
Ruby's (\$25) 5%	\$
Ruth's Chris Steakhouse (\$50) 10%	\$
See's Candies (\$15.60/b) 23%	\$
Souplantation (\$25) 8%	\$
Starbucks Coffee Card (\$10, 25) 7%	\$
Subway (\$10, 50) 3%	\$
TGI Fridays (\$25) 10%	\$
Tully's (\$10) 10%	\$
Wendy's (\$10) 4%	\$

Drug Stores

CVS Pharmacy (\$25, 100) 6%	\$
GNC (\$25) 8%	\$
Rite Aid (\$25) 4%	\$
Walgreen's (\$25, 100) 6%	\$

Department Stores

Great Indoors (\$25, 50, 100, 250) 4%	\$
JC Penney (\$25, 100) 5%	\$
K Mart (\$25, 50) 4%	\$
Kohl's (\$25, 100) 4%	\$
Macy's (\$25, 100) 10%	\$

Entertainment

AMC (\$25) 7%	\$
AMC Single Admission (\$9.50) 16%	\$
Blockbuster Video gift card (\$10) 7%	\$
Blockbuster single use movie (\$3.79) 15%	\$
Blockbuster single game (\$6) 15%	\$
Blockbuster Night Card (\$12) 15%	\$
Cineplex Odeon (\$25) 7%	\$
Cineplex Odeon single use (\$9.50) 16%	\$
Edwards Theaters (\$25) 8%	\$
Edwards Theaters single use (\$9.50) 16%	\$
Hollywood Video (\$10) 16%	\$
iTunes (\$15, 25) 5%	\$
Loews Theaters (\$25) 7%	\$
Loews Theaters single use (\$9.50) 16%	\$
Regal Theaters (\$25) 8%	\$
Regal Theaters single ticket (\$9.50) 16%	\$
United Artists Theaters (\$25) 8%	\$
United Artists Theaters single use (\$9)	\$

Gasoline & Automotive

Arco gas only (\$50, 100) 2%	\$
Arco gas only (\$250) 3%	\$
Auto Zone (\$25) 5%	\$
Chevron (\$50, 100) 1.5%	\$
Chevron (\$250) 2%	\$
Circle K (\$25) 2%	\$
ExxonMobil (\$50) 1.5%	\$
ExxonMobil (\$250) 2%	\$
Jiffy Lube (\$30) 8%	\$
Pep Boys (\$20) 4%	\$
Shell card (\$25, 50, 100) 1.5%	\$
Texaco (\$25) 2%	\$

Grocery Stores

Albertson's (\$25, 100) 4%	\$
Centennial Market (\$20) 5% - <i>ltd supply</i>	\$
Henry's Farmers Market (\$25) 3%	\$
Safeway (\$25, 100) 4%	\$
Smart & Final (\$25, 50, 100) 3%	\$
Stater Brothers (\$25, 100) 5%	\$
Pavillions (\$25, 100) 4%	\$
Vons (\$25, 100) 4%	\$

Hardware & Home Repair

Ace Hardware (\$25, 100) 4%	\$
Home Depot (\$25, 100, 500) 4%	\$
Lowe's (\$25, 100, 500, 1000) 4%	\$

Specialty Stores

1-800-FLOWERS (\$25) 10%	\$
Aéropostole (\$25) 7%	\$
American Eagle Outfitters (\$25) 9%	\$
AT&T 125 minute phone card (\$9.50) 20%	\$
Amazon.com (\$25, 100) 4%	\$
B Dalton (\$10, 25, 100) 9%	\$
Banana Republic (\$25) 9%	\$
Barnes & Noble (\$10, 25, 100) 9%	\$
Bass Pro Shops (\$25, 100) 9%	\$
Bath & Body Works (\$10, 25) 13%	\$
Bed Bath & Beyond (\$25) 7%	\$
Best Buy (\$25, 100, 250) 3%	\$
Big 5 (\$25) 8%	\$
Borders (\$10, 25) 9%	\$
Build-A-Bear Workshop (\$25) 8%	\$
Catherines Plus (\$25) 6%	\$

Specialty Stores cont.

Claire's (\$10) 9%	\$
Crate and Barrel (\$25, 100) 8%	\$
The Container Store (\$25) 9%	\$
Disney Gift Card (\$25, 100, 1000) 2%	\$
Dress Barn (\$25) 8%	\$
Eddie Bauer (\$25) 10%	\$
Express (\$25) 10%	\$
Family Christian Stores (\$25) 8%	\$
Fashion Bug (\$25) 6%	\$
Foot Locker (\$25) 9%	\$
GameStop (\$25) 3%	\$
Gap/Baby Gap/Gap Kids (\$25) 9%	\$
Golfsmith (\$25) 8%	\$
Great Clips (\$25) 8%	\$
Guitar Center (\$25) 4%	\$
Gymboree (\$25) 13%	\$
Hallmark (\$25) 4%	\$
Harry & David (\$25) 10%	\$
J. Crew (\$25) 13%	\$
J. Jill (\$25) 11%	\$
Jo-Ann Fabrics (\$20) 6%	\$
Kay Jewelers (\$50) 6% <i>cannot be used for acct</i>	\$
Kids Foot Locker (\$25) 9%	\$
L.L. Bean (\$25, 100) 15%	\$
Lady Foot Locker (\$25) 9%	\$
Lands' End (\$25, 100) 9%	\$
Lane Bryant (\$25) 6%	\$
Limited (\$25) 9%	\$
Marshalls (\$25, 100) 7%	\$
Men's Wearhouse (\$25) 8%	\$
Michael's (\$25) 4%	\$
Nike (\$25) 12%	\$
Office Depot (\$25, 100) 4%	\$
Office Max (\$25, 100) 5%	\$
Old Navy (\$25) 9%	\$
Omaha Steaks (\$25) 9%	\$
Payless Shoe Source (\$20) 13%	\$
Pier 1 Imports (\$25) 9%	\$
Pottery Barn (\$25, 100) 8%	\$
Pottery Barn (\$25, 100) 8%	\$
Radio Shack (\$25) 4%	\$
Regis Salon (\$25) 8%	\$
REI (\$25) 8%	\$
Restoration Hardware (\$25, 100) 12%	\$
Ross Dress for Less (\$25) 8%	\$
Sally Beauty (\$25) 12%	\$
Sam's Club (\$25, 100, 250) 2%	\$
Sephora (\$20) 4%	\$
Spa Finder (\$25) 8%	\$
Sports Authority (\$25, 100) 8%	\$
Staples (\$25, 100) 5%	\$
Sunglass Hut (\$25) 12%	\$
Tanger Outlets (\$25) 8% - <i>use within 1 yr</i>	\$
TJ Maxx (\$25, 100) 7%	\$
Toys/Kids/Babies R' Us (\$20) 1.5%	\$
Ulta (\$25) 4%	\$
Waldenbooks (\$10, 25) 9%	\$
Wal Mart (\$25, 100, 250) 2%	\$
White Barn Candle (\$10, 25) 13%	\$
Williams-Sonoma (\$25, 100) 8% <i>no online</i>	\$

Travel

American Airlines (\$50, 100, 250) 8%	\$
Avis Rent A Car (\$50) 8%	\$
Best Western (\$25, 100) 12%	\$
Budget Rent A Car (\$50) 8%	\$
Carnival Cruise (\$100) 8%	\$
Clarion/Comfort Inn/Quality Inn (\$25, 100)	\$
Celebrity Cruise Lines (\$100) 11%	\$
Courtyard (\$50, 100, 500) 12%	\$
Fairfield Inn (\$50, 100, 500) 8%	\$
Fairmont Hotels (\$100) 12%	\$
Hyatt Hotels (\$25, 50, 100) 9%	\$
Marmott (\$50, 100, 500) 8%	\$
Renaissance Hotels (\$50, 100, 500) 12%	\$
Ritz Carlton (\$50) 8%	\$

Added: Ruby's • Aéropostole • Guitar Center • Nike • Pinkberry • Henry's Farmers Market / Dropped: Brookstone • Long's • Circuit City
 on Change: Marie Callender's - 12% • Outback Steakhouse - 8% • iTunes - 5% • P.F. Chang - 8% • KFC - 8% / Changed Denomination - iTunes (\$25 added) • Domino's
 Other: Blockbuster Night Card = 2 movie rentals, 2-liter of Coke & tub of popcorn

Key: "filled" - scrip order filled • "back order" - scrip to be received at later time • "temporarily unavailable" - the scrip order was not able to be placed, but it has not been dropped from the program; attempts to place the order will be made in subsequent orders unless a refund or replacement order is requested.