



Wilson Instrumental Music Club, Inc.

WIMsical Notes

<http://www.TheRWMA.org>

Band Room
Phone Number
(626) 934-4572

Parent Volunteer
Phone Number
(626) 771-9505

Volume XLIII, Issue 7

June 2010

Upcoming Events:

- June 14—Summer School Starts
- July 5-4th of July Parade
- July 7-TGIFriday's Fundraiser
- August 16-WIMclub Board Meeting
- August 17-Band Camp Begins
- August 27-Family Potluck

Inside this issue:

Sound Board	2
President's Message	3
RWMA Definition of Terms	5
What is Shared Cost?	6
4th of July Parade	7
Banquet Awards	8
Question and Answers for Parents	9



Director's Take

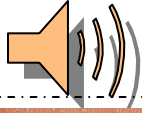
Greetings!

The end of the school year is always bittersweet. It is a time when we not only look back at the accomplishments of just this past year, but the past four years of the graduating seniors. We congratulate them on surviving four years of Wilson High School and for many, four years of the RWMA. There has been much that has been accomplished both in and out of the RWMA. As we bid them "farewell" (I prefer "see you later"), we begin to look forward to the next year as the rookies become veterans and some take on new leadership roles. And soon we will have a new set of rookies who will assimilate into the RWMA family.

Likewise, I look at the parent boosters who will be leaving us and have an appreciation for all their contributions. Some parents have been around for four (or more) years and have been as vital a part of the RWMA family as the students. But like the students, we have parents of underclassmen who will be stepping up to fill their roles. And like the graduating seniors, I hope to see some of our graduating parents coming back to visit whether it is to help out at the GSFC or just to say "hello". And we will welcome the new parents as they begin they get their feet wet (although I encourage them to dive right in).

I always sound like a broken record when I say "it's been a successful year!", and it not by chance that it is every year. It is through hard work and dedication that each year we, the entire RWMA family, can look back and say with confidence that it has been a good year. And hopefully next year will be no different.

Jonathan Chang
Director



The Sound Board



Hi Everyone!

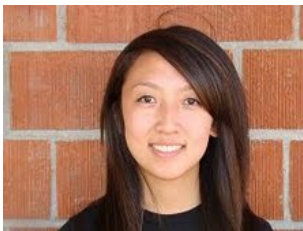
It is sad for me to say that this is the close of the year and it is time to say goodbye. I really enjoyed this year and am glad to have been the Drum Major of the band. Looking back at the time that has past, it has gone way too fast. The past 4 years have been a journey which I am so sad to part with, but since life goes on, I am very glad to have been a part of it and will never let these memories go. This past year was a never ending road of success and being the best that we can be and I applaud everyone in the band and color guard for never giving up and always trying. But

none of that could have been accomplished without the help of the moms and dads that have stuck with us through anything that we had to do, so I thank you moms and dads! J And that also goes out to even to all the moms and dads that do even the simple task of supporting your kid with all the things we do ranging from bringing your kids to rehearsals or forking out money for their shared cost, we could not be all that we were without your help.

As always with the RWMA, next year seems very promising. With Mr. Chang's expertise, this band can never go wrong unless pigs start to fly and the moon is found out to be made of cheese, then just maybe. The band ending in 8th place at championships this year, color guard doing very well in their winter guard season placing 7th in their round, jazz band placing first at Mt Sac, wind ensemble getting an excellent rating, and concert band getting a superior rating. Overall we are seated well for another great year. So I wish the best of luck to everyone next year. Thank you Mr. Chang and everyone in the band for letting me be your Drum Major and the sax section leader for the past 2 years, you have been all so great to me so I thank you. Good luck everybody!

Oh! And p.s. class of 2010 seniors rock!

**David Moon, 2008-2010 Drum Major/
Saxophone Section Leader**

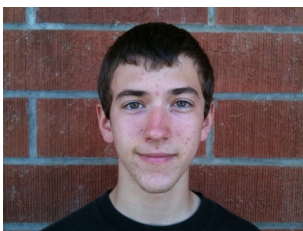


Another year has gone by in a flash and this time, we're a bit sad to see it go. As seniors of the RWMA, it has been an honor to participate in such a prestigious group. We can easily say that we've learned tons of lessons that go beyond band, such as managing time, organizing ourselves and always pushing to be our very best. All that we've learned was definitely tested as we served our time as co-Presidents of the Alliance Council. We hope to say that we've passed with flying colors. Given our extended responsibilities, this year has been extremely challenging, but we wouldn't have it any other way. A lot of hard work was put in by all of the Alliance Council members, making our positions enjoyable, rather than difficult.



No other group offers a wholesome experience like this one which is why we aren't leaving without tons of happy memories. It's time for us to move on, heading our separate ways. This group and Mr. Chang have treated us really well and it's safe to say we are well-prepared for the future ahead of us. The Class of 2010 wishes the RWMA the very best!

**Samantha Hong & Andrew Lam,
2009-2010 Presidents & Section Leaders**



Hello Everybody,

I am Tyler Greenup, and I will be this year's Alliance Council president. Just a couple things about me, last year I was one of the vice presidents and the secretary, the year before that I was a member at large, and this year I'm planning on keeping things going and running smoothly. I have some ideas that I think would be really helpful to make the RWMA better, and just increase productivity within the council itself. Also I'm looking forward to being able to work closely with the WIM club president so that we can try to make this year a good one. For fundraisers, we have another one at TGI Fridays on July 7th from 11 a.m. to 11 p.m. so don't forget. I'm looking forward to this next year and working with everyone so let's exceed some expectations.

Tyler Greenup, 2010-2011 President & Percussion Section Leader

Continued on page 4

President's Message



Welcome Freshman Parents!

Summer band will be starting on June 14, and your student will begin to train to be a part of the Royal Wilson Marching Alliance (RWMA). It is a time that is both exciting and exhausting. In the end, it will be a learning experience for everyone.

I would like to define some of the terms you will be hearing often over the next weeks, to help you understand the structure of the band and color guard. Students are members of the band or color guard; both groups are members of the Royal Wilson Marching Alliance (RWMA). The Wilson Instrumental Music Club, Inc. (WIM Club) is the group **you** belong to. It is a non-profit organization with

the sole purpose of serving as the parent booster support organization for the RWMA and to promote the music and educational programs of Glen A. Wilson High School. We accomplish this through fundraising and through the involvement of each parent.

It takes a great deal of money and labor to support a unit of approximately 120 students. All of the sources of revenue to pay the expenses are derived from the shared cost each student may pay, and from fundraising events that are scheduled throughout the year. More information on the shared cost obligation will come at a later date. This year, the WIM Club will need to raise approximately \$50,000.00 above the shared cost collected from each student to cover the expenses of the RWMA for the school year. Our major fundraising event is a field show competition at Wilson High School known as the Golden State Field Classic (GSFC). This will be our 22nd year and will be held on Saturday, October 30th. As this is a large event to sponsor and is our largest fundraising event of the year, we ask each parent to help us by working that day. More information on this event will be presented during band camp in August.

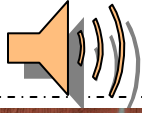
Your help is also needed during the fall competition season. It takes a lot of manpower to move the band and color guard to each competition, field show and football game. We need parents to help feed the students on Saturdays, check uniforms in and out, load and unload all of the equipment from the trucks and on and off the field for each performance. We need you to volunteer to help at all of these events for whatever time you can provide; you do not need to be at all events all the time. If you are available to work at the competitions you will have the opportunity to see the performances first hand, and not have to wait until late night to get the results of the competition.

You will also find a FAQ for freshman parents in this newsletter. Please take some time to look over the information, it may answer many questions you might have. If you have any unanswered questions, please feel free to ask myself or any of the other veteran parents. You will also find a calendar of events in this and every issue of our monthly WIMsical Notes Newsletter. The calendars are also available in the band room, so ask your student to check for updated calendars, as they are updated frequently. Another important item you will find in this issue is a form to provide us with your contact information; either phone or email, we need to be able to get information to you in the most efficient manner.

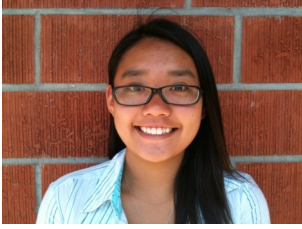
I look forward to getting to know and working with you during the upcoming year. There will be a family potluck dinner and orientation meeting on the last night of band camp, Thursday, August 20. Please plan on attending this meeting where you will learn about the fall competition season, meet other parents and get a sneak preview of the field show the students will have worked on all summer.

Thank you,

Cindy Greenup
WIM Club President



The Sound Board, cont.



Hey Everyone! I would like to thank all graduating seniors for their hard work and wish them good luck! As another year has come and gone, a new year is about to start, bringing new memories and more experiences that everyone will cherish and remember. As the new drum major, I am excited to meet the incoming freshman, and hoping to create new memories with the new and returning members of Band. I am looking forward to the upcoming year with high hopes

and eagerness.

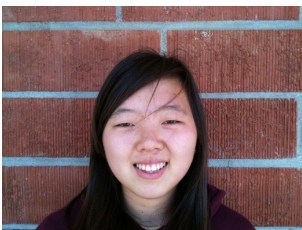
July 4th is coming up soon, which means all of us here at band will be working extra hard to put up a fantastic parade for everyone to enjoy. Since this year's 4th of July is on a Sunday, our parade would actually be on the 5th. Hope to see everyone there supporting and cheering for the Royal Wilson Marching Alliance, I know this would be one parade you won't want to miss! Hope to see you there!

Liliane Ly, 2010-2011 Drum Major



All I can say is, "wow". My 4 years in the RWMA and Color Guard are finally over. Of course, it's a bittersweet moment. Color guard was a huge part of my life these past 4 years in high school. Looking back, I feel incredibly lucky and grateful to have even made the decision to try out for the team. This past year has been a great one. From the beginning of summer rehearsals to band camp to field season, the color guard has improved tremendously. We grew as a team and as a family and as a result, were once again very successful in our competitions. As second semester came along, the team members from field season shifted and changed to what became our winter guard. Performing to "You and Me" by Dave Matthews, second semester proved to be one of the best seasons of color guard in all my 4 years simply because the experience of it all was so worthwhile. Being in the color guard and actually having the honor of holding a leadership position for 3 years has given me so much and has changed my life for the better. It was a learning experience and at the same time one of the best times of my life thus far. I would like to personally thank our instructors Peter Gomez and Wendy Lomeli for always being patient and for being the best coaches ever! But of course, thank you Mr. Chang for an amazing 4 years which without you, would have never been possible. I wish the RWMA and of course, the color guard the best of luck for the years to come! But as for now, goodbye everyone!

Ashley Ho, 2009-2010 Color Guard Captain



Hello everybody! The year is sadly coming to an end. Looking back at the wonderful memories of 2009-2010 at the banquet really made the ending of this year poignant. This year was full of exciting moments starting from band camp, championships for both Marching Season and Winter guard and to Banquet. However, now we have to say goodbye to our seniors and wait for the upcoming year to come.

Next year, there will be new members to meet and new memories to be made. Not only will I be a senior, but I will also be a captain for our guard. Being selected as a captain is a lot of responsibility and I will do my best. I would like to say farewell to the seniors and good luck!

Jenny Sohn, 2010-2011 Color Guard Captain

Royal Wilson Marching Alliance

Definition of Terms

The Royal Wilson Marching Alliance – RWMA: This is an alliance of the marching band and color guard that comes together to perform at various events and to compete in Southern California field show tournaments and parades. The Director of the RWMA is Mr. Jonathan Chang.

WIM Club, Inc.: The Wilson Instrumental Music Club, Inc. is the **parent** booster organization charged with the fundraising activities and assisting in deploying the marching band and color guard of Glen A. Wilson High School at all performances. All parents of band and color guard students are members of the organization and are asked to participate in the events of both the RWMA and WIM Club.

Glen A. Wilson Marching Band: This is the actual band, which will number approximately 105 students this year. Students participate in the band for class credit. The marching unit performs at parades and band tournament competitions throughout Southern California and sometimes throughout the state. Field show competitions occur on Saturdays during the fall semester each year. The band will perform during the second semester on an occasional basis. During the second semester, the students are divided between several different musical performing groups; Wind Ensemble, Concert Band, Jazz Band, and Drumline.

Color Guard: The color guard was originally organized to carry the “Wilson” sign for the band in parades. The unit has evolved into a performing unit in its own right and complements the band at field show competitions. The color guard also competes all year, with indoor competitions during the second semester of the school year. The color guard is part of the RWMA, with a paid professional instructor reporting to the Band Director, who is assisted by the Vice President – Color Guard. This elected parent officer represents the color guard on the WIM Club Board of Directors

Band Council: This is the student leadership group for the Royal Wilson Marching Alliance. There are members from both the band and color guard on the Band Council. It mirrors the parent booster organization, the WIM Club, with respect to fundraising and assisting the Band Director in implementing Alliance policies and leading the RWMA.

Golden State Field Classic – GSFC: The RWMA hosts its own adjudicated band tournament in the Fall of each year. This year it will be held on the fourth Saturday in October. The GSFC organization is a stand alone organization that is responsible for the planning, operating, and financials for the event. It reports to the WIM Club Board of Directors. The organization has its own treasurer and committee chairpersons drawn from the WIM Club. Parent volunteers manage concessions, parking, facilities, etc. The GSFC hosts between 25 and 30 bands and approximately 10,000 people during the day long band competition. It is mandatory that each student of the RWMA work the GSFC the entire day and one parent of each student work a minimum of one shift that day. This is the WIM Club’s largest fundraising event of the year. We manage to raise the majority of the funds needed for the year through it.

Southern California School Band & Orchestra Association – SCSBOA: This is usually referred to as the “SCSBOA”. This is the organization that governs the field show competitions and supplies the judges for the field show competitions in Southern California. They also sponsor a Championship Field Show Tournament at the end of the season featuring the top ten bands in each class.

District Festival: The District Festival is held during the second semester of the school year, usually in March. This is the spring evaluation of the Wind Ensemble and Concert Band. The Marching Band is divided into these two band organizations for the second semester. It occurs on a weekday and runs from approximately 8:30 AM to 9:00 PM. It involves approximately 24 bands and 2,000 students. All the bands from the four high schools and all the middle school bands in the school district participate. Some bands from outside of the school district participate on occasion. Every four years, Wilson High School is required to host this adjudicated district band festival. When we host this event, it requires WIM Club participation and support. Each of the four high schools in the district rotates the hosting of the District Festival. The other host high schools are Los Altos, La Puente, and Workman. Wilson will host the festival in the spring of 2011.

Area Concert: This is a joint concert held in the Spring each year in the Wilson High School Gym. It consists of the performing bands from the two middle schools that are associated with Wilson High School; Cedarlane, Mesa Robles and the elementary schools in the quadrant as well. The RWMA also performs at this concert and it is used as a “recruiting” tool for both students and parents to get involved in the instrumental music program at Wilson High School.

What is Shared Cost?

Why do we need to pay it?

Each student that is a member of the Royal Wilson Marching Alliance has a financial obligation for the year; known as “shared cost”. These funds are necessary to pay for specialized instructors, vehicles to move equipment to each field show, competition and football game, entry fees for the competitions, new instruments and equipment for the RWMA, uniforms, repair and maintenance of existing instruments and equipment, and food for the students on the competition days, usually Saturday. The funds provided by the school district do not come close to covering all these expenses, especially for a group of 120 students. This year, we estimate that in addition to the shared costs we will collect, the WIM Club will have to raise approximately \$40,000 through fundraisers to meet all these expenses.

The shared cost obligation for the band members and the color guard are different. For each band member, the shared cost obligation of **\$375** is due Wednesday, August 17th, the first day of band camp. It can be paid as a lump sum or in four installments. If you choose to pay by installments, they are due on the following dates:

First Installment:	Due: June 17	\$100
Second Installment:	Due: August 17	\$100
Third Installment:	Due: October 1	\$100
Final Installment:	Due: November 1	Remaining balance

The first installment is due the first summer rehearsal. Fundraising events are scheduled each month, beginning in band camp, to help the students earn their shared cost obligation. The WIM Club also has a scrip program. You can purchase scrip for many stores, restaurants, and other services in the area. A percentage of the face value of the scrip will go to your student’s shared cost account. Purchasing scrip is a very easy and quick way to raise some of your shared cost obligation.

The Golden State Field Classic (GSFC) is the WIM Club’s major fund raising event of the year. This single event brings in the most funds to offset the \$40,000 we need to raise. **Everyone in the RWMA** is responsible for selling advertisements for the GSFC Program. Your student received information on selling these ads during the second week of summer band. The selling of ads is underway and many students have already turned in some ads.

Finally, Mr. Chang is the administrator for all of the students’ shared cost accounts. Any questions you may have about the balance in your account should be directed to him. If you have any financial constraints or questions, please bring the matter to Mr. Chang’s attention immediately and he will work with you.



4TH OF JULY

Hacienda Heights Parade

CALLING ALL RWMA PARENTS!!!

We need your help to staff the parade and the snack booth. We'll be selling sno-cones, water, coffee, and donuts. The parade this year is on Monday, July 5th!!

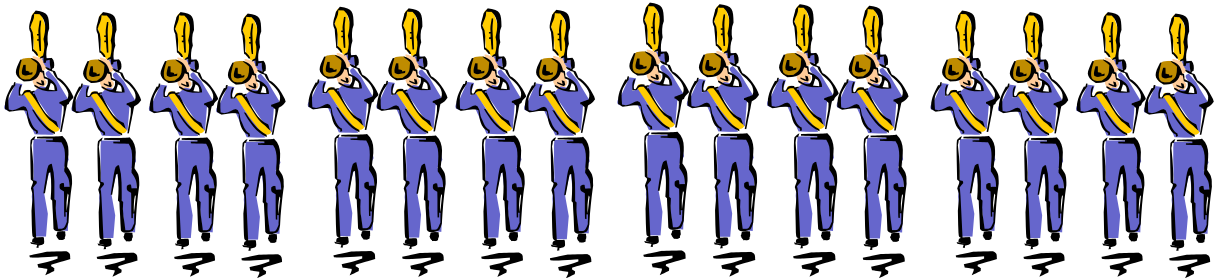
We Need:

PARENTS FOR THE SET UP CREW FROM 7AM TO 9AM

PARENTS FOR THE 8AM TO 10AM SHIFT

PARENTS FOR THE 10AM TO 1PM SHIFT

PARENTS FOR THE CLEAN UP CREW FROM 11:30AM TO 2PM



**If you cannot make it, please donate bags of ice or bottled water.
Please bring it to Steinmetz Park at 7:00AM.**

***Contact Cindy Greenup if you have any questions!
(626) 369-4019***

“From the Past to the Present” - RWMA AWARDS BANQUET

The 44th Annual RWMA Awards Banquet was held on Friday, May 21st, at the Radisson Hotel in Whittier. The theme for the banquet this year was “From the Past to the Present.” As usual, there were many deserving individuals that were recognized for their support of the RWMA and for their scholastic achievements.

Awards

Outstanding Freshman – **Zachary Lee**
Outstanding Sophomore – **Claudia Ferrer**
Outstanding Junior – **Tyler Greenup**
Outstanding Senior – **Andrew Lam**
Hardest Worker – **Michael McKay**
Director’s Award – Percussion Ensemble – **Joshua Scrivens**
Director’s Award – Color Guard – **Ashley Ho**
Director’s Award – Jazz Band – **David Moon**
Director’s Award – Wildcat Band – **Samantha Hong**
Most Outstanding – Color Guard – **Ashley Ho**
Most Improved – Color Guard – **Ariel Wong**
Most Outstanding Musician – Varsity Band – **Zachary Lee**
Most Improved Musician – Varsity Band – **Shoude Zhang**
Most Outstanding Musician – Wind Ensemble – **Andrew Lam**
Most Improved Musician – Wind Ensemble – **Kyle Lin**
Most Outstanding Musician – Jazz Band – **Joshua Scrivens**
Most Improved Musician – Jazz Band – **George Ferrer**
Most Outstanding Musician – Percussion Ensemble – **Samantha Hong**
Most Improved Musician – Percussion Ensemble – **Matthew Yang**

Scholarships

Glen A. Wilson Memorial Scholarship Award – **David Moon**
Seth Wayne Ober Memorial Scholarship – **Jenny Wu**
Kenneth Alan Holthouser Memorial Scholarship – **Derek Louie**
Gilbert R. Adams Scholarship Award – **Andrew Lam**
Alumni Scholarship Award – **Samantha Hong**
WIM Club Scholarship – **Ashley Ho & Joshua Scrivens**
Winter Guard Association of Southern California Scholarship – **Ashley Ho**

2010-2011 Field Officers

Drum Major – **Liliane Ly**
Assistant Drum Major – **Michael McKay**
Color Guard Captain – **Jenny Sohn**
Color Guard 1st Lieutenant – **Aubrey Magalang & Karen Ornelas**
Color Guard 2nd Lieutenant – **Catherine Becerra & Cherie Leung**

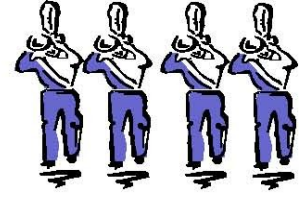
Band Section Leaders

Flutes – **Leslie Ventura**
Clarinets – **Lena Kil**
Saxophones – **Josue Padilla & Michael McKay**
Trumpets – **Andrew Ceja**
Mellophones – **Nikko Lowe**
Tenor Brass – **Brian Song**
Tubas – **Ryan Lewis**
Pit Percussion – **Alicia Wong**
Battery Percussion – **Tyler Greenup**

Congratulations to all the scholarship and award winners. Congratulations and best wishes to all the seniors!



RWMA – Royal Wilson Marching Alliance



Questions & Answers for Parents of Incoming Freshmen

Q: What is the Royal Wilson Marching Alliance?

A: This is the group which performs at football game halftime shows, parades, field show competitions, and pep rallies. It includes the Band and Color Guard (Tall Flags). First semester concentrates on Marching Band while second semester concentrates on Concert Band. There are other optional performance groups that include Wind Ensemble, Jazz Band, Spring Drumline/Percussion Ensemble, and Chamber Music. To participate in band, you should be enrolled for the entire year.

Q: Who may join the band?

A: Anyone who is interested!

Q: What are the benefits of being in band?

A: Before school even starts, your child will become networked with friends from all grade levels. The friends they make in band are often the friends they are with outside of band. Academically, they become a well-rounded student that colleges look for when it is time for them to apply for college. Studies indicate that students in a music program perform academically higher than other students. They also learn teamwork and time management skills that will be very useful in college and in their careers. Finally, they become a part of a family. As a part of a family, they will create experiences they will treasure for the rest of their life.

Q: What are the requirements to join the band?

A: Most importantly, they must have a good attitude and self-discipline to be in band. Working as a big team can be a large task, but if everyone has the right attitude and is willing to work, wonderful things can happen. There is also a financial responsibility they must fulfill (see next question).

Q: What are the expenses involved in being in the band?

A: There are a couple of things they need to purchase that are part of their marching uniform. One item that hopefully they will not need to purchase year after year is shoes (approximately \$30). They will also need to purchase gloves, which are also part of their uniform (approximately \$1.50 a pair). Depending on how well they take care of their gloves will depend on how many pair they will need to purchase. They also will have to pay half the cost (\$7-\$9) for a shirt to be worn in the 4th of July Parade. They can use the same shirt in future years. Besides these, there are many expenses that the band incurs that necessitate fund raising. The average amount needed to meet our financial goals is \$375 per student. They are expected to raise this amount by participating in fundraisers throughout the school year. A schedule of all the fundraisers for the school year will be established before the beginning of school. If their combined profits from all their fundraising activities meet the \$375 shared cost requirement, there is no need to make any monetary contributions to the band. However, should they choose not to participate in fundraising or meet the expectations for fundraising for the year, they will have to make a payment for the balance of what they were expected to raise. The purpose of this type of program is not to put a financial burden on you or your family, but to ensure that everyone contributes to the general welfare of the Royal Wilson Marching Alliance. This is not to say, if they do not participate in fundraising that they are not a contributor. Some families choose simply to make a payment for the full amount and not participate in fundraising at all. It is your choice.

If trips are planned, there are additional costs. The band has recently performed in Fairfield, California, San Antonio, Texas, Orlando, Florida, and Honolulu, Hawaii.

Q: As an incoming freshman in the band, what special preparations do students need to make?

A: As a freshman, they should be enrolled in band for summer school. This class does not conflict with the rest of the regularly scheduled academic classes. The band class is generally in the afternoon from 1:00 -3:30PM with one or two evening rehearsals each week. A schedule will be available prior to the end of school. For the fall, you should be signed up for both Varsity Band and Marching Band PE. You receive fine arts credit for Varsity Band and PE credit for Marching Band PE. Even if you are involved in a fall sport, you should be enrolled in Marching Band PE.

Q: What is taught in band summer school?

A: Students will learn how to march individually and in a group, play and march at the same time, read marching and maneuvering charts, memorize scales, and play the music used for our competitive field show as well as music used at football games. This opportunity allows new students to learn the fundamentals of marching and playing necessary to perform with returning members of the band at Band Camp. Preparations are also made to perform in the Hacienda Heights 4th of July Parade.

Q: What if my child cannot attend all of band summer school?

A: They should come as often as they can. If they come part-time, we can more than likely teach them all that is necessary to be ready for band camp. However, they will not earn full credit. They should attend what classes they can, even if they cannot attend all six weeks. If they are unable to participate in this summer class, they should contact Mr. Chang and arrangements can be made for them to stay up-to-date with what is being taught so that they do not fall behind and may participate in the fall.

Q: What is Band Camp?

A: This is a camp held on campus 2 weeks before school begins, where all of the members of the *RWMA* prepare for the beginning of the fall competition season. They will learn the pre-game and halftime shows. They should know their 12 major scales, chromatic scale, and a prepared piece which will be given to them on the first day of band camp. This is a required camp. If they are unable to participate in any part of band camp, they must notify Mr. Chang as soon as possible. This year's band camp schedule is as follows:

August 17 - 20: 12:00 - 4:00 PM and 5:00 - 9:00 PM

August 23 - 27: 12:00 - 4:00 PM and 5:00 - 9:00 PM

Q: How much extra time does band take?

A: During the fall, there are evening rehearsals traditionally on Tuesdays and Thursdays from 6:00 PM to 9:00 PM. They will receive PE credit for these rehearsals. Then there are performances. The band performs at home football games (4 to 5 Friday evenings; away football games have traditionally been optional), field show tournaments (5 to 6 Saturdays), and concerts. The fall semester is the busiest time of the year, especially October through the end of November. The spring semester is lighter, with only sporadic evening rehearsals and concerts taking up out-of-class time. There are other musical opportunities that they may choose, that may increase the amount of extra time they spend on music, such as Jazz Band, Spring Drumline, and Chamber Music. These groups are optional and require an audition.

Q: Can my child also be on an athletic team such as football or other activities and still be in *RWMA*?

A: Yes. The coaches and advisors are very cooperative at Wilson High School and we are willing to share a student who is interested in more than one activity.

Q: What other things can the student do to prepare for band?

A: One of the best ways for them to improve their musical skills is through individual practice and private lessons. Ask Mr. Chang how to practice, what to practice, or where to find a private instructor. There is a proper and improper way to practice. If they do not practice properly, they are simply wasting time.

Q: What can I do to support my child in the band?

A: A lot of adult help is needed to move the band to a performance, such as checking in and out uniforms, chaperoning on the busses, assisting in feeding the kids before or after a performance, and transporting the large instruments. The WIM Club (Wilson Instrumental Music Club) is the organization of adults that provides that support and anything Mr. Chang may need. As much time as you can give will be greatly appreciated. We need people's help for each performance; each halftime show, band competition, etc. Your participation will not only assist in the performance of the band, but it also will demonstrate your support and interest in your child. It is very rewarding and fun at the same time! To volunteer, see one of the WIM Club Board of Directors or just show up when you drop off your child for a performance.

Q: What are some of the tasks adults can do to help the band?

A: As stated above, adult help is needed for each performance; home football games - half time shows, away football games, band competitions, etc. Sometimes, we feed the students before the Saturday band competitions, so we need help cooking and serving food. During band camp, we need help fitting and sewing the uniforms for each student. We need help loading and unloading the uniforms and instruments from the trucks at Wilson and at the competitions. We also need help in moving the percussion instruments (known as the "pit") onto the field for every type of performance. We need help checking in and out the band uniforms at every performance as well. As you can see, there is a lot of work to move and prepare a 125+ member band for a performance. We need all the help we can get! Even if you can help at only one performance – please come out and join us when you can!!

If you have any other questions regarding the *RWMA*, please feel free to call Mr. Chang at (626) 934-4572 or you can E-mail him at jjchang@hlpusd.k12.ca.us