



Wilson Instrumental Music Club, Inc.

WIMsical Notes

<http://www.TheRWMA.org>

Band Room
Phone Number
(626) 934-4572

Parent Volunteer
Phone Number
(626) 771-9505

Upcoming Events:

SPRING CONCERT
May 14th @ 7pm

AWARDS BANQUET
*May 21st, 6:30pm @
Whittier Radison*

SUMMER SCHOOL
June 14—July 14

BAND CAMP
*August 17-20
August 23-27*

Inside this issue:

Sound Board	2
President's Message	3
RWMA Awards Banquet	4
Calendar for May & June	5
Calendar for July & August	6
Scrip Order Form	7
WIMsical Newsletter Going Paperless	8

Volume XLIII, Issue 6

May 2010



Director's Take

Greetings! It doesn't seem too long ago that we were preparing for the field season!

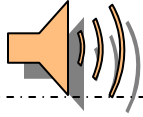
Now, the end of the year is just around the corner! While the fall season is very busy, the winter/spring keeps everyone on their toes as we have several groups participating in different activities. Our Percussion Ensemble performed well in their debut at the Southern California Percussion Alliance show at

Aliso Viejo and ended up in 2nd place in the Scholastic Open Concert Percussion Division. The Color Guard's season ended their regular season with a 1st place finish at the Winter Guard Association of Southern California Marina High School show and had a strong performance at their championships. The Jazz Band competed at the Mt SAC Jazz Festival and won 1st place in their division. And at the District Music Festival, the Wind Ensemble received an Excellent rating and Superior rating in Sight Reading while the Concert Band received unanimous Superior ratings in Performance and Sight Reading. Now, the year winds down with our end-of-the-year performances and the Awards Banquet. I hope you have the opportunity to watch our students perform one more time and celebrate with us at the Awards Banquet as we recognize all our accomplishments as well as look forward to the future.

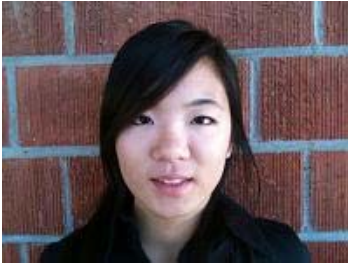
Jonathan Chang
Director

Congratulations, Ashley!!!

Congratulations to Ashley Ho for being awarded a scholarship from the Winter Guard Association of Southern California. Her award was announced recently at the WGASC Championships.



The Sound Board



Hey everyone! The year is coming closer to an end and there are so many events coming up. The jazz band has been furiously working for the past two weeks preparing for the Mt. SAC Jazz Festival on May 1st. The RWMA will also have a pancake breakfast and car wash coming up on May 8th. This will once again be at Shepherd of the Valley Church. We hope that a lot of people will come out and support the band and color guard. Coming up, we also have the Chamber Music Recital featuring groups of different instruments; Spring Finale with performances from our color guard, percussion and mallet ensemble, and jazz band; Spring Concert; Jazz Concert; and Area Concert, where the RWMA of 2009-2010 will perform their field show music for one last time. The year ends with banquet as we look back at what we've done this year and award the members. We are and will also be having fundraisers. At the moment, we are selling packages of M&Ms for a dollar each. Family and friends, please come out and support! Thank you!

Jenny Wu, Senior, Tenor Brass Section Leader & Librarian



Hey Everyone! Well as most of you know, the drumline did not march In-door this year. Instead, we have been working with more percussion and keys rather than banging on the battery drums and running around the Gym floor! Our Percussion Ensemble is doing very well. Our instructor Pete decided to put people on instruments they are comfortable with, then for another song, he has us play something that we may have never played before. This has been very beneficial to us in gaining new knowledge of percussion and we are DEFINITELY having a great time!

On another note, it's almost banquet time! Its crazy how we have already voted for Outstanding Senior, Outstanding Junior, etc. I'm very eager to seeing who's going to be taking over the jobs as section leaders as well as the council positions. I wish all the candidates the best of luck!!

Josh Scrivens, Senior, Drumline Section Leader

Band Room Wish List Update

Thank you to the families of the following students who donated items from the Wish List published in February:

David Moon & Bradley Wong

We still have some items on the list that we could use. If you could donate any of the following items, it would be greatly appreciated.

50 cup coffee maker
Dust Pan
"D" and 9-volt Batteries
Canned Air (to dust electronic instruments and equipment)

President's Message



I can't believe that the end of the school year is just around the corner. It seems like just yesterday that our students were heading off to band camp. This has been a fun and rewarding year for me, but I couldn't have done anything without all the help and support I have received from everyone who volunteered from altering uniforms, filling water bottles, covering the bleachers, running concessions, feeding band members, driving – either the truck or the golf cart, coordinating fundraisers, working the GSFC, editing the newsletter, chaperoning the students, and every other

job that needs to be done to make our organization run smoothly and successfully. This is the greatest group ever!

However; it is not just an ending, it is the beginning of a whole new season. So, while we bid fare well, and good luck to our graduating seniors; we welcome our newest members and start the process anew; summer band, 4th of July parade, and band camp.

The elections for our 2010-2011 board were held on April 19. Congratulations to our new board members (although it does look very familiar):

President: Cindy Greenup
Vice President – Ways & Means: Edward Fierro
Vice President – Color Guard: Helena Wong
Secretary: Kathy Ishida
Treasurer: James VanGerpen
Members at Large: Candace Reeley & Gracie Padilla

I would like to say "Thank you" to those of you serving another term and "Welcome" to our new board members. I am looking forward to another successful year.

To our board members who will be leaving us: Jodi Scrivens, Maria Lam – Thank you for your hard work and efforts, you made our year a success. We will miss you, be sure to stop in and say "hi".

To our students: Seniors – Congratulations and Good Luck! Juniors, Sophomores, Freshmen & new members – have an even better year next year.

Cindy Greenup
WIM Club President

One World



"From the Past to the Present"

Join us for a Night of Fun, Reminiscing, and Recognition

The RWMA Awards Banquet
Friday, May 21, 2010 @ 6:00pm
Whittier Radisson Hotel

Dinner Tickets: \$25.00

This is a night to celebrate the year's accomplishments, recognize the members of the RWMA, say goodbye to the seniors, and introduce the new leadership for next year!

T I C K E T R E Q U E S T F O R M

44TH ANNUAL AWARDS BANQUET – "FROM PAST TO PRESENT"

Friday, May 21, 2010 ~ Radisson Whittier Hotel

Please include payment for the entire group. Orders are due May 14.

Name _____ # of tickets _____ x \$25 = \$ _____

Phone # _____ Total = \$ _____

Other persons in your group (maximum – 10 per table):

2. _____ 3. _____ 4. _____

5. _____ 6. _____ 7. _____

8. _____ 9. _____ 10. _____

Special Notes:

as of 5/1

May 2010

Sunday	Monday	Tuesday	Wednesday	Thursday	Friday	Saturday
						1 Jazz Band @ Mt SAC
2	3 Color Guard Tryout Workshop 5-7pm WIM Club General Meeting 7pm	4 Color Guard Tryout Workshop 5-7pm Percussion Rehearsal 5-8pm	5 Scrip Order placed Color Guard Tryout Workshop 5-7pm Perc Rehearsal 3:30-6pm Mallet Ensemble 6-7pm	6 Color Guard Tryouts 5pm Chamber Music Recital 7pm	7 Spring Finale 7pm	8 Car Wash & Pancake Breakfast 8am-2pm Shepherd of the Valley Church
9 <i>Mother's Day</i>	10	11 Percussion Rehearsal 5-8pm TGI Friday's Fundraiser	12 Percussion Ensemble Rehearsal 3:30-6pm Mallet Ensemble 6-7pm	13 Concert Band/Wind Ens Rehearsal 6-9pm	14 Spring Concert 7pm	15 Percussion Ensemble @ Orange Lutheran
16	17 Drum Major Tryouts Elections 6-8pm WIM Club Board Meeting 7pm	18 Jazz Concert 7pm Little Theater	19 Scrip Order placed <i>last order of the year</i>	20	21 Awards Banquet @Whittier Radlsson 6:30pm	22 Wilson Quadrant Rummage Sale 7-11am
23	24	25	26 Area Concert 7pm	27	28	29
30	31					

June 2010

Sunday	Monday	Tuesday	Wednesday	Thursday	Friday	Saturday
		1	2	3 Picture Frame Orders due	4	5
6	7 WIM Club General Meeting 7pm Alliance Council Leadership Seminar 3-6pm	8	9 <i>Finals (0, 2, 4, 6)</i>	10 <i>Finals (1, 3, 7)</i> <i>Last Day of School</i> Graduation 5pm	11 Alliance Council Leadership Seminar & Work Day	12
13	14 Summer School 1-3:30pm	15 Summer School 1-3:30pm	16 Summer School 1-3:30pm	17 Summer School 1-3:30pm Rehearsal 6-9pm	18	19
20	21 Summer School 1-3:30pm	22 Summer School 1-3:30pm	23 Summer School 1-3:30pm Rehearsal 6-9pm	24 Summer School 1-3:30pm	25	26
27	28 Summer School 1-3:30pm	29 Summer School 1-3:30pm	30 Summer School 1-3:30pm			

July 2010

Sunday	Monday	Tuesday	Wednesday	Thursday	Friday	Saturday
				1 Summer School 1-3:30pm Rehearsal 6-9pm	2 Drum Corps Show @ San Deigo (Vista HS)	3 Drum Corps Show @ Walnut (Mt SAC)
				4 Drum Corps Show @ Pasadena (Rose Bowl)	5 <u>4th of July Parade</u> Drum Corps Show @ Riverside (RCC)	6 Summer School 1-3:30pm
11	12 Summer School 1-3:30pm	13 Summer School 1-3:30pm Rehearsal 6-9pm	14 Summer School 1-3:30pm	15	16 Drum Corps Show @ Corona (Roosevelt HS)	17 Drum Corps Show @ Paramount HS
18	19	20	21	22	23	24
25	26	27	28	29	30	31

August 2010

Sunday	Monday	Tuesday	Wednesday	Thursday	Friday	Saturday
1	2	3	4	5	6	7
8	9	10	11	12	13	14
15	16	17 Band Camp 12-4pm Band Camp 5-9pm	18 Band Camp 12-4pm Band Camp 5-9pm	19 Band Camp 12-4pm Band Camp 5-9pm	20 Band Camp 12-4pm Band Camp 5-9pm	21
22	23 Band Camp 12-4pm Band Camp 5-9pm	24 Band Camp 12-4pm Band Camp 5-9pm	25 Band Camp 12-4pm Band Camp 5-9pm	26 Band Camp 12-4pm Band Camp 5-9pm	27 Band Camp 12-4pm Band Camp 5-9pm	28
29	30	31				

RWMA / WIM CLUB SCRIP ORDER FORM

last updated 3/16/10

Student's Name _____ Date _____ Total amount enclosed: Check \$ _____ / Cash \$ _____

Numbers in parenthesis are cash denominations of the certificates. Percentages are the credit we receive that go directly to a student's account. Scrip is subject to availability and change by the Great Lakes Scrip Center. Please make checks payable to WIM CLUB.

Restaurants & Food

Acapulco (\$25) 9%	\$
Applebee's (\$25, 50) 8%	\$
Arby's (\$10) 8%	\$
Bahama Breeze (\$25) 9%	\$
Baja Fresh (\$25) 7%	\$
Baskin Robbins (\$2) 9%	\$
Blue Coral Seafood & Spirits (\$25) 5%	\$
Boston Market (\$10) 12%	\$
Bruegger's Bagels (\$10) 5%	\$
Buca di Beppo (\$25) 8%	\$
Burger King (\$10) 4%	\$
California Pizza Kitchen (\$10) 4%	\$
Carl's Jr. (\$10) 9%	\$
Carrows (\$10) 8%	\$
Champps Americana (\$25) 5%	\$
Chart House (\$25, 100) 9%	\$
Cheeseburger in Paradise (\$25) 5%	\$
Cheesecake Factory (\$25) 5%	\$
Chevy's (\$25) 8%	\$
Chili's (\$25) 11%	\$
Chipotle Mexican Grill (\$10) 10%	\$
Chuck E. Cheese (\$10) 8%	\$
Claim Jumper (\$25) 8%	\$
Coco's (\$10) 8%	\$
Coffee Bean & Tea Leaf (\$25) 9%	\$
Cold Stone Creamery (\$10) 8%	\$
Dave & Buster's (\$25) 13%	\$
Del Taco (\$10) 4%	\$
Denny's (\$10) 7%	\$
Domino's Pizza (\$10) 5%	\$
Dream Dinners (\$75) 8%	\$
Dunkin Donuts (\$10) 4%	\$
El Pollo Loco (\$10) 6%	\$
El Torito (\$25) 9%	\$
El Torito Grill (\$25) 9%	\$
Fazoli's (\$25) 7%	\$
Fleming's Steakhouse (\$25) 5%	\$
Hard Rock Café (\$25) 10%	\$
Hometown Buffet (\$25) 5%	\$
Honeybaked Ham (\$10) 10%	\$
Islands Restaurant (\$25) 8%	\$
Jack in the Box (\$10) 4%	\$
Jamba Juice (\$10) 7%	\$
KFC (\$5) 8%	\$
Krispy Kreme <i>spot card</i> (\$10) 50%	\$
Little Caesar's (\$20) 8%	\$
Long John Silver's (\$5) 8%	\$
Macaroni Grill (\$25) 11%	\$
Maggiano's Little Italy (\$25) 11%	\$
Marie Callender's (\$25) 12% <i>temporarily</i>	\$
Mimis Café (\$25) 8%	\$
Olive Garden (\$25) 9%	\$
On The Border (\$25) 11%	\$
Outback Steakhouse (\$25) 8%	\$
P. F. Chang's (\$25) 8%	\$
Panera Bread (\$10, 25) 9%	\$
Papa John's Pizza (\$10) 8%	\$
Peet's Coffee & Tea (\$20) 8%	\$
Pei Wei Asian Diner (\$25) 7%	\$
Pick Up Stix (\$25) 12%	\$
Pinkberry (\$10) 5%	\$
Pizza Hut (\$10) 8%	\$
Rainforest Café (\$25, 100) 9%	\$
Red Lobster (\$25) 9%	\$
Red Robin (\$25) 9%	\$
Rock Bottom (\$25) 6%	\$
Rocky Mtn Chocolate Factory (\$10) 11%	\$
Roy's (\$25) 5%	\$
Ruby Tuesday (\$25) 8%	\$
Ruby's (\$25) 5%	\$
Ruth's Chris Steakhouse (\$50) 10%	\$
See's Candies (\$16, 10lb) 23%	\$
Souplantation (\$25) 8%	\$
Starbucks Coffee Card (\$10, 25) 7%	\$
Subway (\$10, 50) 3%	\$
TGI Fridays (\$25) 10%	\$
Tully's (\$10) 10%	\$
Wendy's (\$10) 4%	\$

Drug Stores

CVS Pharmacy (\$25, 100) 6%	\$
GNC (\$25) 8%	\$
Rite Aid (\$25) 4%	\$
Walgreen's (\$25, 100) 6%	\$

Department Stores

Great Indoors (\$25, 50, 100, 250) 4%	\$
JC Penney (\$25, 100) 5%	\$
K Mart (\$25, 50) 4%	\$
Kohl's (\$25, 100) 4%	\$
Macy's (\$25, 100) 10%	\$
Neiman Marcus (\$50) 12%	\$

Entertainment

AMC (\$25) 7%	\$
AMC Single Admission (\$9.50) 16%	\$
Blockbuster Video <i>gift card</i> (\$10) 7%	\$
Blockbuster <i>single use movie</i> (\$3.79) 15%	\$
Blockbuster <i>single game</i> (\$6) 15%	\$
Blockbuster Night Card (\$12) 15%	\$
Cineplex Odeon (\$25) 7%	\$
Cineplex Odeon <i>single use</i> (\$9.50) 16%	\$
Edwards Theaters (\$25) 8%	\$
Edwards Theaters <i>single use</i> (\$9.50) 16%	\$
iTunes (\$15, 25) 5%	\$
Loews Theaters (\$25) 7%	\$
Loews Theaters <i>single use</i> (\$9.50) 16%	\$
Regal Theaters (\$25) 8%	\$
Regal Theaters <i>single ticket</i> (\$9.50) 16%	\$
United Artists Theaters (\$25) 8%	\$
United Artists Theaters <i>single use</i> (\$9)	\$

Gasoline & Automotive

Arco <i>gas only</i> (\$50, 100) 2%	\$
Arco <i>gas only</i> (\$250) 3%	\$
Auto Zone (\$25) 5%	\$
Chevron (\$50, 100) 1.5%	\$
Chevron (\$250) 2%	\$
Circle K (\$25) 2%	\$
ExxonMobil (\$50) 1.5%	\$
ExxonMobil (\$250) 2%	\$
Jiffy Lube (\$30) 8%	\$
Pep Boys (\$20) 4%	\$
Shell card (\$25, 50, 100) 2.5%	\$
Texaco (\$25) 2%	\$

Grocery Stores

Albertson's (\$25, 100) 4%	\$
Centennial Market (\$20) 5% - <i>not supply</i>	\$
Henry's Farmers Market (\$25) 3%	\$
Safeway (\$25, 100) 4%	\$
Smart & Final (\$25, 50, 100) 3%	\$
Stater Brothers (\$25, 100) 5%	\$
Pavillions (\$25, 100) 4%	\$
Vons (\$25, 100) 4%	\$

Hardware & Home Repair

Ace Hardware (\$25, 100) 4%	\$
Home Depot (\$25, 100, 500) 4%	\$
Lowe's (\$25, 100, 500, 1000) 4%	\$

Specialty Stores

1-800-FLOWERS (\$25) 10%	\$
Aéropostole (\$25) 7%	\$
American Eagle Outfitters (\$25) 10%	\$
AT&T 125 minute phone card (\$9.50) 20%	\$
Amazon.com (\$25, 100) 4%	\$
B Dalton (\$10, 25, 100) 9%	\$
Banana Republic (\$25) 9%	\$
Barnes & Noble (\$10, 25, 100) 9%	\$
Bass Pro Shops (\$25, 100) 9%	\$
Bath & Body Works (\$10, 25) 13%	\$
Bed Bath & Beyond (\$25) 7%	\$
Best Buy (\$25, 100, 250) 3%	\$
Big 5 (\$25) 8%	\$
Borders (\$10, 25) 9%	\$
Build-A-Bear Workshop (\$25) 8%	\$
Catherines Plus (\$25) 6%	\$

Specialty Stores cont.

Claire's (\$10) 9%	\$
Crate and Barrel (\$25, 100) 8%	\$
The Container Store (\$25) 9%	\$
Disney Gift Card (\$25, 100, 1000) 2%	\$
Dress Barn (\$25) 8%	\$
Eddie Bauer (\$25) 10%	\$
Express (\$25) 10%	\$
Family Christian Stores (\$25) 8%	\$
Fashion Bug (\$25) 6%	\$
Foot Locker (\$25) 9%	\$
GameStop (\$25) 3%	\$
Gap/Baby Gap/Gap Kids (\$25) 9%	\$
Golfsmith (\$25) 8%	\$
Great Clips (\$25) 8%	\$
Guitar Center (\$25) 4%	\$
Gymboree (\$25) 13%	\$
Hallmark (\$25) 4%	\$
Harry & David (\$25) 10%	\$
J. Crew (\$25) 13%	\$
J. Jill (\$25) 11%	\$
Jo-Ann Fabrics (\$20) 6%	\$
Kay Jewelers (\$50) 6% <i>cannot be used for acct</i>	\$
Kids Foot Locker (\$25) 9%	\$
L.L. Bean (\$25, 100) 15%	\$
Lady Foot Locker (\$25) 9%	\$
Lands' End (\$25, 100) 16%	\$
Lane Bryant (\$25) 6%	\$
Limited (\$25) 9%	\$
Marshalls (\$25, 100) 7%	\$
Men's Wearhouse (\$25) 8%	\$
Michael's (\$25) 4%	\$
Nike (\$25) 12%	\$
Office Depot (\$25, 100) 4%	\$
Office Max (\$25, 100) 5%	\$
Old Navy (\$25) 9%	\$
Omaha Steaks (\$25) 9%	\$
Payless Shoe Source (\$20) 13%	\$
Pier 1 Imports (\$25) 9%	\$
Pottery Barn (\$25, 100) 8%	\$
Pottery Barn (\$25, 100) 8%	\$
Radio Shack (\$25) 4%	\$
Regis Salon (\$25) 8%	\$
REI (\$25) 8%	\$
Restoration Hardware (\$25, 100) 12%	\$
Ross Dress for Less (\$25) 8%	\$
Sally Beauty (\$25) 12%	\$
Sam's Club (\$25, 100, 250) 2%	\$
Sephora (\$20) 4%	\$
Spa Finder (\$25) 8%	\$
Sports Authority (\$25, 100) 8%	\$
Staples (\$25, 100) 5%	\$
Sunglass Hut (\$25) 12%	\$
Tanger Outlets (\$25) 8% - <i>use within 1 yr</i>	\$
TJ Maxx (\$25, 100) 7%	\$
Toys/Kids/Babies 'R' Us (\$20) 1.5%	\$
Ulta (\$25) 4%	\$
Waldenbooks (\$10, 25) 9%	\$
Wal Mart (\$25, 100, 250) 2%	\$
White Barn Candle (\$10, 25) 13%	\$
Williams-Sonoma (\$25, 100) 8% <i>no online</i>	\$

Travel

American Airlines (\$50, 100, 250) 8%	\$
Avis Rent A Car (\$50) 8%	\$
Best Western (\$25, 100) 12%	\$
Budget Rent A Car (\$50) 8%	\$
Carnival Cruise (\$100) 8%	\$
Clarian/Comfort Inn/Quality Inn (\$25, 100)	\$
Celebrity Cruise Lines (\$100) 11%	\$
Courtyard (\$50, 100, 500) 12%	\$
Fairfield Inn (\$50, 100, 500) 8%	\$
Fairmont Hotels (\$100) 12%	\$
Hyatt Hotels (\$25, 50, 100) 9%	\$
Marriott (\$50, 100, 500) 8%	\$
Omni Hotels (\$100) 8%	\$
Renaissance Hotels (\$50, 100, 500) 12%	\$
Ritz Carlton (\$50) 8%	\$

Added: Omni Hotels • Neiman Marcus • Ruby's • Aéropostole • Guitar Center • Nike • Pinkberry • Henry's Farmers Market / Dropped: Hollywood Video • Brookstone • Long
 ntribution Change: American Eagle - 10% • Shell - 2.5% • Lands' End - 16% • Domino's Pizza - 8% / Changed Denomination - See's Candy (\$16, 10lb) • iTunes (\$25 add
 Other: Blockbuster Night Card = 2 movie rentals, 2-liter of Coke & tub of popcorn

Key: "filled" - scrip order filled • "back order" - scrip to be received at later time • "temporarily unavailable" - the scrip order was not able to be placed, but it has not been
 dropped from the program; attempts to place the order will be made in subsequent orders unless a refund or replacement order is requested.