



Wilson Instrumental Music Club, Inc.

WIMsical Notes

<http://www.TheRWMA.org>

**Band Room
Phone Number
(626) 934-4572**

**Parent Volunteer
Phone Number
(626) 771-9505**

Upcoming Events:

Football Games

- Oct 1 - 8th Grade Night Home game vs. El Monte
- Oct 8 - Away game vs. Covina
- Oct 15 - Homecoming vs. Northview
- Oct 22 - Home game vs. Nogales
- Oct 29 - Away game vs. Baldwin Park

GSFC/Meetings

- Oct 18 - WIMclub Board Meeting/GSFC Meeting
- Oct 25 - GSFC Meeting
- Oct 26 - GSFC Worker Meeting
- Oct 30 - Golden State Field Classic Event date

Band Tournaments

- Oct 23 - Baldwin Park Field Show Tournament
- Nov 6 - Irvine Field Tournament

Inside this issue:

Sound Board	2
President's Message	3
Golden State Field Classic	4
RWMA Definition of Terms	5
What is Shared Cost?	6
Question and Answers for Parents	7
WIMClub Board of Directors	9
e-Notes Signup Form	10

Volume XLIV, Issue 2

September 2010



Director's Take

Greetings!

We are now well into the school year and the competitive marching band season will soon be upon us. After a successful summer of rehearsals and Band Camp, the members of the Royal Wilson Marching Alliance are now focused on preparing the field show in hopes for another successful marching season. While our total membership is down a little this year, the quality of the program is definitely not! The students have been done well in preparing for the season and continue to have a great work ethic moving as the school year starts. And the instructional staff has stayed relatively intact. While we have lost Mr. Christopher Valentine, who is working on completing his Master's degree, and Lex Martin, who is working on other endeavors, we have added two alumni to the staff, Jon Eichhorn (Class of '07) and Josh Scrivens (Class of '10), both helping out with our percussion section.

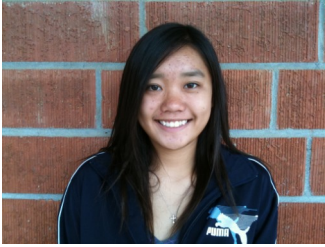
If you haven't had a chance to catch a performance yet, we have a slightly different sound and look. This year's show is titled "Earth: Construction in Four Movements" and is composed by Key Poulan, best known as the arranger for the Santa Clara Drum & Bugle Corps. Unlike the music used in the past that was arranged from pre-existing musical sources, this year's music is original music, written expressly for the field. On the visual side of things, we have our own Peter Gomez is writing the drill this year. The fact that the drill writer is also an instructor will really give us the ability to tailor the drill to fit our strengths and weaknesses.

I encourage everyone, especially parents, to be involved. Attend meetings, performances, volunteer for competitions and football games, or just show up at an evening rehearsal. Your participation and support is valued by both the booster organization and the students.

Jonathan Chang
Director



The Sound Board



After two weeks of an extremely grueling band camp, a brand new school year has begun and with it a fresh start. Although it can be quite tough balancing school work and rehearsal, know that there will always be other band members to support you through it all. As we continue with our enthusiastic cries as “ONE”, we are learning our new drills for the field show at a fairly good pace. With competition in the mid-October, our band as a whole continues to work hard and strive for championship at the end of the season. We have had a great start in the beginning of the school year; I am definitely looking forward to the rest of the season!

Liliane Ly—Drum Major



Hello everyone!

The hardest part of our season is well over, band camp, two long weeks , nine hours a days, But we're not even close to being done! School is back in session and we have so much more to go and look forward to and stay on top of! Our evening and Saturday rehearsals have just started as well as football games and this season is off to a great start! Each and every one of us -both student and staff- are working hard at putting the show together and we're well into the ever so exciting second piece, Fire! And even better things are becoming so much more efficient in rehearsals as we're getting a lot more accomplished both musically and visually within those hours compared to past years. We're all especially excited once we get into competitions and with great effort from each band member we'll have an extraordinary show to put out! We have a great year ahead of us and for you RWMA parents come out and support our band at shows and fundraisers!

Leslie Ventura—Flute Section Leader



Greetings! Band Camp is over, school has started and everyone's lives have become busier. However, these past rehearsals have benefited us to a high extent. Thanks to our wonderful staff including the instructors and our director, Mr. Chang, the RWMA has grown in music and marching in the small amount of time. We can't forget our hard working booster parents! Currently we are working on our visuals for the second movement “Fire,” while we have just begun our third movement which is “Water.” I believe that we are moving at a steady pace, and most if not all members seem to be acting with urgency! Backtracking to our first show, which was during last week's football game, the RWMA had a strong start and performed with motivation. Even though our group is smaller than usual, we are learning to perform as well as the bigger groups. Of course, we strive to perform better with our fullest potential! Our next performance will be on the 24th of September at the home football game. Feel free to support us and cheer on with RWMA pride! For more information regarding RWMA-related events, check out our website at www.therwma.org or check us out at the official Facebook page!

Brian Song—Tenor Brass Section Leader

President's Message



Thank you to everyone who signed up & showed up to work our first home football game. We have another home game on Friday, September 24 against La Puente. Hopefully the momentum started at the Los Altos game will carry through on Friday.

The band looked great on the field Friday night. Thank you to Kathy Ishida and her team of parents who worked tirelessly to get the students fitted, and the uniforms altered. It was a lot of hard work, but it paid off.

Now, it is time to buckle down and get ready for the GSFC, or Golden State Field Classic for the newer members of our group. The GSFC is the most important fundraising and largest event of the year for the WIM Club. This year marks the twenty-first annual event and will be held Saturday, **October 30th** at Dave Merrill Memorial Stadium. The entire Royal Wilson Marching Alliance hosts this event. All students of the *RWMA* are expected to work the entire day and sell advertising space in the souvenir program. Parents are asked to work at least one, four hour shift. The marching band and color guard depend on this fundraiser to make up the funding gap between the shared cost requirements and expected expenditures for the year. Everyone supports this event including the Wilson High School administrators as well as the Hacienda-La Puente District management and Board of Education.

With the economy being in the state that it is, we are not receiving significant monies from the district, so we need to work even harder to earn funds for our organization. Ads and monies are due to Mr. Chang by Thursday, September 23, please get these in ASAP.

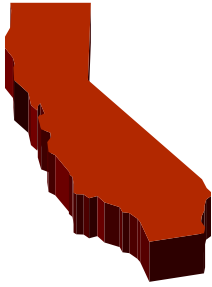
8th Grade Night will be on Friday, October 1, 2010. This is the night we sponsor the 8th graders & their families to give them a glimpse into the life of a high school marching band and encourage them to continue with band in high school. We will be holding a potluck to feed the band members, so please watch for information to come out a little closer to the event.

Cindy Greenup
WIM Club President

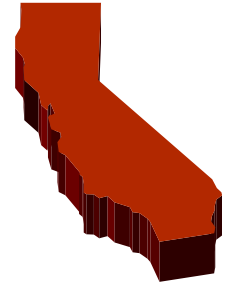


THANK YOU!!!

Thank you to the Liliane Ly and Lena & Minnie Kil families for their recent monetary donations to the WIM Club! Their generous contributions to the organization are greatly appreciated in these tough economic times.



**22nd Annual
Golden State Field Classic – “GSFC”
Field Show Competition
It is that time of year – AGAIN!!!!**



The most important fundraising event of the year for the WIM Club is the **"Golden State Field Classic (GSFC)"**. This year marks the twenty-second year of this event and it will be held on Saturday, October 30th, at Dave Merrill Memorial Stadium. The entire Royal Wilson Marching Alliance hosts this event. All students of the RWMA are expected to work the entire day and sell advertising space in the souvenir program. Parents are asked to work at least one, four hour shift and are encouraged to contact their employer and friends to solicit ads. The marching band and color guard depend on this fundraiser to make up the funding gap between the shared cost requirements and expected expenditures for the year. Everyone supports this event including the Wilson High School administrators, the Hacienda-La Puente District management and the HLPUSD Board of Education.

The GSFC is an adjudicated event; meaning official judges from the Southern California School Band & Orchestra Association are selected to evaluate each band's performance of their field show. For the past twenty years, we have hosted a very successful tournament, thanks to the generous support of parents, students, alumni, friends, and community businesses. It is estimated that approximately 8,000 – 10,000 people attend our day long event. **Everyone must help by volunteering to work that day!**

The GSFC is organized on a committee system. Committee Chairpersons are volunteer parents from the band and color guard. Each committee chairperson needs volunteers to work shifts during the day.

This is a critical year for us. Many of the chairpersons from the last couple of years have "graduated", and we need new parents to step forward and take these positions. The one good thing is that the past parents have left excellent written instructions on what needs to be done. The biggest responsibility is overseeing the volunteers and students working in that area on the day of the GSFC.

Look for more information regarding the Golden State Field Classic from your student, on the official RWMA website (www.TheRWMA.org), and in the next edition of the WIMSical Newsletter. Our next meeting will be Monday, October 4 at 7:00 pm in the band room.

Royal Wilson Marching Alliance

Definition of Terms

The Royal Wilson Marching Alliance – RWMA: This is an alliance of the marching band and color guard that comes together to perform at various events and to compete in Southern California field show tournaments and parades. The Director of the RWMA is Mr. Jonathan Chang.

WIM Club, Inc.: The Wilson Instrumental Music Club, Inc. is the **parent** booster organization charged with the fundraising activities and assisting in deploying the marching band and color guard of Glen A. Wilson High School at all performances. All parents of band and color guard students are members of the organization and are asked to participate in the events of both the RWMA and WIM Club.

Glen A. Wilson Marching Band: This is the actual band, which will number approximately 105 students this year. Students participate in the band for class credit. The marching unit performs at parades and band tournament competitions throughout Southern California and sometimes throughout the state. Field show competitions occur on Saturdays during the fall semester each year. The band will perform during the second semester on an occasional basis. During the second semester, the students are divided between several different musical performing groups; Wind Ensemble, Concert Band, Jazz Band, and Drumline.

Color Guard: The color guard was originally organized to carry the “Wilson” sign for the band in parades. The unit has evolved into a performing unit in its own right and complements the band at field show competitions. The color guard also competes all year, with indoor competitions during the second semester of the school year. The color guard is part of the RWMA, with a paid professional instructor reporting to the Band Director, who is assisted by the Vice President – Color Guard. This elected parent officer represents the color guard on the WIM Club Board of Directors

Band Council: This is the student leadership group for the Royal Wilson Marching Alliance. There are members from both the band and color guard on the Band Council. It mirrors the parent booster organization, the WIM Club, with respect to fundraising and assisting the Band Director in implementing Alliance policies and leading the RWMA.

Golden State Field Classic – GSFC: The RWMA hosts its own adjudicated band tournament in the Fall of each year. This year it will be held on the fourth Saturday in October. The GSFC organization is a stand alone organization that is responsible for the planning, operating, and financials for the event. It reports to the WIM Club Board of Directors. The organization has its own treasurer and committee chairpersons drawn from the WIM Club. Parent volunteers manage concessions, parking, facilities, etc. The GSFC hosts between 25 and 30 bands and approximately 10,000 people during the day long band competition. It is mandatory that each student of the RWMA work the GSFC the entire day and one parent of each student work a minimum of one shift that day. This is the WIM Club’s largest fundraising event of the year. We manage to raise the majority of the funds needed for the year through it.

Southern California School Band & Orchestra Association – SCSBOA: This is usually referred to as the “SCSBOA”. This is the organization that governs the field show competitions and supplies the judges for the field show competitions in Southern California. They also sponsor a Championship Field Show Tournament at the end of the season featuring the top ten bands in each class.

District Festival: The District Festival is held during the second semester of the school year, usually in March. This is the spring evaluation of the Wind Ensemble and Concert Band. The Marching Band is divided into these two band organizations for the second semester. It occurs on a weekday and runs from approximately 8:30 AM to 9:00 PM. It involves approximately 24 bands and 2,000 students. All the bands from the four high schools and all the middle school bands in the school district participate. Some bands from outside of the school district participate on occasion. Every four years, Wilson High School is required to host this adjudicated district band festival. When we host this event, it requires WIM Club participation and support. Each of the four high schools in the district rotates the hosting of the District Festival. The other host high schools are Los Altos, La Puente, and Workman. Wilson will host the festival in the spring of 2011.

Area Concert: This is a joint concert held in the Spring each year in the Wilson High School Gym. It consists of the performing bands from the two middle schools that are associated with Wilson High School; Cedarlane, Mesa Robles and the elementary schools in the quadrant as well. The RWMA also performs at this concert and it is used as a “recruiting” tool for both students and parents to get involved in the instrumental music program at Wilson High School.

What is Shared Cost?

Why do we need to pay it?

Each student that is a member of the Royal Wilson Marching Alliance has a financial obligation for the year; known as “shared cost”. These funds are necessary to pay for specialized instructors, vehicles to move equipment to each field show, competition and football game, entry fees for the competitions, new instruments and equipment for the RWMA, uniforms, repair and maintenance of existing instruments and equipment, and food for the students on the competition days, usually Saturday. The funds provided by the school district do not come close to covering all these expenses, especially for a group of 120 students. This year, we estimate that in addition to the shared costs we will collect, the WIM Club will have to raise approximately \$40,000 through fundraisers to meet all these expenses.

The shared cost obligation for the band members and the color guard are different. For each band member, the shared cost obligation of **\$375** is due Wednesday, August 17th, the first day of band camp. It can be paid as a lump sum or in four installments. If you choose to pay by installments, they are due on the following dates:

First Installment:	Due: June 17	\$100
Second Installment:	Due: August 17	\$100
Third Installment:	Due: October 1	\$100
Final Installment:	Due: November 1	Remaining balance

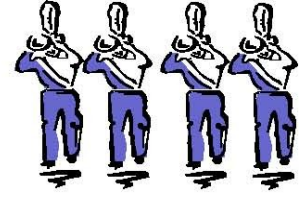
The first installment is due the first summer rehearsal. Fundraising events are scheduled each month, beginning in band camp, to help the students earn their shared cost obligation. The WIM Club also has a scrip program. You can purchase scrip for many stores, restaurants, and other services in the area. A percentage of the face value of the scrip will go to your student’s shared cost account. Purchasing scrip is a very easy and quick way to raise some of your shared cost obligation.

The Golden State Field Classic (GSFC) is the WIM Club’s major fund raising event of the year. This single event brings in the most funds to offset the \$40,000 we need to raise. **Everyone in the RWMA** is responsible for selling advertisements for the GSFC Program. Your student received information on selling these ads during the second week of summer band. The selling of ads is underway and many students have already turned in some ads.

Finally, Mr. Chang is the administrator for all of the students’ shared cost accounts. Any questions you may have about the balance in your account should be directed to him. If you have any financial constraints or questions, please bring the matter to Mr. Chang’s attention immediately and he will work with you.



RWMA – Royal Wilson Marching Alliance



Questions & Answers for Parents of Incoming Freshmen

Q: What is the Royal Wilson Marching Alliance?

A: This is the group which performs at football game halftime shows, parades, field show competitions, and pep rallies. It includes the Band and Color Guard (Tall Flags). First semester concentrates on Marching Band while second semester concentrates on Concert Band. There are other optional performance groups that include Wind Ensemble, Jazz Band, Spring Drumline/Percussion Ensemble, and Chamber Music. To participate in band, you should be enrolled for the entire year.

Q: Who may join the band?

A: Anyone who is interested!

Q: What are the benefits of being in band?

A: Before school even starts, your child will become networked with friends from all grade levels. The friends they make in band are often the friends they are with outside of band. Academically, they become a well-rounded student that colleges look for when it is time for them to apply for college. Studies indicate that students in a music program perform academically higher than other students. They also learn teamwork and time management skills that will be very useful in college and in their careers. Finally, they become a part of a family. As a part of a family, they will create experiences they will treasure for the rest of their life.

Q: What are the requirements to join the band?

A: Most importantly, they must have a good attitude and self-discipline to be in band. Working as a big team can be a large task, but if everyone has the right attitude and is willing to work, wonderful things can happen. There is also a financial responsibility they must fulfill (see next question).

Q: What are the expenses involved in being in the band?

A: There are a couple of things they need to purchase that are part of their marching uniform. One item that hopefully they will not need to purchase year after year is shoes (approximately \$30). They will also need to purchase gloves, which are also part of their uniform (approximately \$1.50 a pair). Depending on how well they take care of their gloves will depend on how many pair they will need to purchase. They also will have to pay half the cost (\$7-\$9) for a shirt to be worn in the 4th of July Parade. They can use the same shirt in future years. Besides these, there are many expenses that the band incurs that necessitate fund raising. The average amount needed to meet our financial goals is \$375 per student. They are expected to raise this amount by participating in fundraisers throughout the school year. A schedule of all the fundraisers for the school year will be established before the beginning of school. If their combined profits from all their fundraising activities meet the \$375 shared cost requirement, there is no need to make any monetary contributions to the band. However, should they choose not to participate in fundraising or meet the expectations for fundraising for the year, they will have to make a payment for the balance of what they were expected to raise. The purpose of this type of program is not to put a financial burden on you or your family, but to ensure that everyone contributes to the general welfare of the Royal Wilson Marching Alliance. This is not to say, if they do not participate in fundraising that they are not a contributor. Some families choose simply to make a payment for the full amount and not participate in fundraising at all. It is your choice.

If trips are planned, there are additional costs. The band has recently performed in Fairfield, California, San Antonio, Texas, Orlando, Florida, and Honolulu, Hawaii.

Q: As an incoming freshman in the band, what special preparations do students need to make?

A: As a freshman, they should be enrolled in band for summer school. This class does not conflict with the rest of the regularly scheduled academic classes. The band class is generally in the afternoon from 1:00 -3:30PM with one or two evening rehearsals each week. A schedule will be available prior to the end of school. For the fall, you should be signed up for both Varsity Band and Marching Band PE. You receive fine arts credit for Varsity Band and PE credit for Marching Band PE. Even if you are involved in a fall sport, you should be enrolled in Marching Band PE.

Questions & Answers for Parents of Incoming Freshmen, Cont.

Q: What is taught in band summer school?

A: Students will learn how to march individually and in a group, play and march at the same time, read marching and maneuvering charts, memorize scales, and play the music used for our competitive field show as well as music used at football games. This opportunity allows new students to learn the fundamentals of marching and playing necessary to perform with returning members of the band at Band Camp. Preparations are also made to perform in the Hacienda Heights 4th of July Parade.

Q: What if my child cannot attend all of band summer school?

A: They should come as often as they can. If they come part-time, we can more than likely teach them all that is necessary to be ready for band camp. However, they will not earn full credit. They should attend what classes they can, even if they cannot attend all six weeks. If they are unable to participate in this summer class, they should contact Mr. Chang and arrangements can be made for them to stay up-to-date with what is being taught so that they do not fall behind and may participate in the fall.

Q: What is Band Camp?

A: This is a camp held on campus 2 weeks before school begins, where all of the members of the *RWMA* prepare for the beginning of the fall competition season. They will learn the pre-game and halftime shows. They should know their 12 major scales, chromatic scale, and a prepared piece which will be given to them on the first day of band camp. This is a required camp. If they are unable to participate in any part of band camp, they must notify Mr. Chang as soon as possible. This year's band camp schedule is as follows:

August 17 - 20: 12:00 - 4:00 PM and 5:00 - 9:00 PM

August 23 - 27: 12:00 - 4:00 PM and 5:00 - 9:00 PM

Q: How much extra time does band take?

A: During the fall, there are evening rehearsals traditionally on Tuesdays and Thursdays from 6:00 PM to 9:00 PM. They will receive PE credit for these rehearsals. Then there are performances. The band performs at home football games (4 to 5 Friday evenings; away football games have traditionally been optional), field show tournaments (5 to 6 Saturdays), and concerts. The fall semester is the busiest time of the year, especially October through the end of November. The spring semester is lighter, with only sporadic evening rehearsals and concerts taking up out-of-class time. There are other musical opportunities that they may choose, that may increase the amount of extra time they spend on music, such as Jazz Band, Spring Drumline, and Chamber Music. These groups are optional and require an audition.

Q: Can my child also be on an athletic team such as football or other activities and still be in *RWMA*?

A: Yes. The coaches and advisors are very cooperative at Wilson High School and we are willing to share a student who is interested in more than one activity.

Q: What other things can the student do to prepare for band?

A: One of the best ways for them to improve their musical skills is through individual practice and private lessons. Ask Mr. Chang how to practice, what to practice, or where to find a private instructor. There is a proper and improper way to practice. If they do not practice properly, they are simply wasting time.

Q: What can I do to support my child in the band?

A: A lot of adult help is needed to move the band to a performance, such as checking in and out uniforms, chaperoning on the busses, assisting in feeding the kids before or after a performance, and transporting the large instruments. The WIM Club (Wilson Instrumental Music Club) is the organization of adults that provides that support and anything Mr. Chang may need. As much time as you can give will be greatly appreciated. We need people's help for each performance; each halftime show, band competition, etc. Your participation will not only assist in the performance of the band, but it also will demonstrate your support and interest in your child. It is very rewarding and fun at the same time! To volunteer, see one of the WIM Club Board of Directors or just show up when you drop off your child for a performance.

Q: What are some of the tasks adults can do to help the band?

A: As stated above, adult help is needed for each performance; home football games - half time shows, away football games, band competitions, etc. Sometimes, we feed the students before the Saturday band competitions, so we need help cooking and serving food. During band camp, we need help fitting and sewing the uniforms for each student. We need help loading and unloading the uniforms and instruments from the trucks at Wilson and at the competitions. We also need help in moving the percussion instruments (known as the "pit") onto the field for every type of performance. We need help checking in and out the band uniforms at every performance as well. As you can see, there is a lot of work to move and prepare a 125+ member band for a performance. We need all the help we can get! Even if you can help at only one performance – please come out and join us when you can!!

If you have any other questions regarding the *RWMA*, please feel free to call Mr. Chang at (626) 934-4572 or you can E-mail him at jgchang@hlpusd.k12.ca.us

WIM CLUB

Board of Directors & Chairpersons

2010 - 2011

We look forward to an exciting year and hope you will join us to support and enjoy "The Royal Wilson Marching Alliance"! This year's Board of Directors consists of the following individuals:

<u>Position</u>	<u>Name</u>	<u>Phone Number</u>	<u>Email Address</u>
Director	Jonathan Chang	(626) 934-4572	igchang@hlpusd.k12.ca.us
President	Cindy Greenup	(626) 369-4019	cagreenup@yahoo.com
V. P. – Ways & Means	Ed Fierro	(626) 369-6299	fierroedward@aol.com
V. P. – Color Guard	Helena Wong	(626) 333-8380	hwong@lasd.org
Secretary	Kathy Ishida	(626) 810-7051	egbok@verizon.net
Treasurer	James VanGerpen	(626) 333-2074	jvangerp@gmail.com
Member-at-Large	Candace Reeley	(626) 9643570	jreeley@msn.com
Member-at-Large	Grace Padilla	(626) 917-3966	graciepadilla@msn.com

Chairpersons

Chaperones	Marilou Li	(626) 961-6575	mlli@hlpusd.k12.ca.us
Golden State Field Classic	Cindy Greenup	(626) 369-4019	cagreenup@yahoo.com
Newsletter	Marilou Li	(626) 961-6575	mlli@hlpusd.k12.ca.us
Communications	Cindy Greenup	(626) 369-4019	cagreenup@yahoo.com
Uniforms	Kathy Ishida	(626) 810-7051	egbok@verizon.net

Be Connected and Be Involved~!

If you have not filled out this eNote form please do and turn it into Mr. Chang. Please fill out the form completely, and if your family does not have an email address please submit your student's email address. They can pass the information on to you. We hope this will help you stay informed about all of the RWMA activities.

Sincerely,
Cindy Greenup

To the parents/guardians of a RWMA member:

In anticipation of the upcoming season, we are putting together email group to better inform you of when we can use your assistance in supporting the RWMA. There will be various opportunities throughout the year. **YOUR participation** will mean much to your student. Let's show them our love and support!

Please provide us with the following information:

(circle one) Band Color Guard

Member's Name(s):

_____ **Grade in the Fall:** _____

_____ **Grade in the Fall:** _____

Parent's/Guardian's Name(s):

Email Address:

If you have any questions, please contact Cindy Greenup @ (626) 369-4019.