



Wilson Instrumental Music Club, Inc.

WIMsical Notes

<http://www.TheRWMA.org>

Band Room
Phone Number
(626) 934-4572

Parent Volunteer
Phone Number
(626) 771-9505

Volume XLIV, Issue 7

June 2011

Upcoming Events:

- Jun 20—Summer School Band begins
- Jun 23—Round Table fundraiser
- Jul 4—4th of July Parade
- Jul 7—Chipotle Fundraiser
- Aug 9—Band Camp begins
- Aug 19—Family Potluck

Inside this issue:

Sound Board	2
RWMA Definitions of Terms	3
Sound Board (Continued)	4
What is Shared Cost?	5
Questions & Answers for Parents	6
Congratulations	8
Board & Staff Members	9
Fundraiser Campaign Letter	10
Band Room Renovation	11



Director's Take

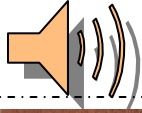
Greetings!

It doesn't seem that it was too long ago that we were beginning the new year and working towards our first performance, the 4th of July Parade. A lot has happened since then, close to 50 different performances to be more precise. All the groups were very successful and accomplished much. Congratulations to the 19 graduating RWMA members, many who are 4-year members! As we look back at the accomplishments of 2010-2011, we also look forward to the promise of the things to come as the Class of 2015 joins us for the first time!

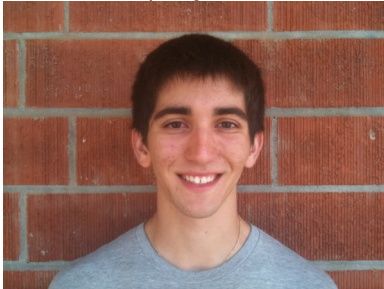
We have booster parents who are also "graduating" this year, and like the many alumni who return to watch performance or to lend a helping hand at GSFC, we hope to see these familiar faces return, too. We are thankful for their dedication and support throughout the years. I would also like to recognize this year's board members and thank them for their efforts, as well. While Cindy Greenup is not "graduating" this year, she is stepping down as president after serving for two years. Like the many WIM Club presidents before her, she did a great job leading the troops in supporting our kids. I look forward to working with the new board and the "rookie" parents this coming year.

Jonathan Chang
Director





The Sound Board



It's that time of the year again. The sweltering heat. The clean band room. New freshman. It all reminds me of the beginning to every year of the RWMA: Summer Band, where everything is fresh, clean, and ready to be learned (or relearned for the returning veterans).

The turnout for our new members looked really successful. With our guard almost doubling, and the band size increasing, our RWMA family seems to have grown. Right now, we're in the process of teaching marching and learning the music for the Fourth of July, the RWMA's first appearance in performance. All the new members are really enthusiastic about our program, and are quick to learn it too. I foresee a great parade performance on the Fourth of July and in all our future performances.

Also, the RWMA learned what our theme for our field show was going to be about last week. All of us are really excited to be part of this year's AWESOME AND EXCITING field show, and hope to make this year one of the best and most memorable in the history of the RWMA.

Let's make this the best year ever!

**Michael McKay - Senior
Drum Major / Historian**



Hi everyone!

Another year has gone by in a flash and my last time to write a whimsical note has finally come! Of course, all of the memories I had with the RWMA and especially, the guard has been bittersweet. I really enjoyed this year and am honored to have been the captain for our color guard. Looking back, I'm really glad to have joined the team and I will never forget the nonstop practices, competitions, hot Saturday practices, and especially, spraining ankles, and getting bruises. This past year, was a never ending road of success and being the best that we can be, I thank everyone in the color guard and band for their hard work. It was really great to see each color guard member grow and

being passionate about what they do. We grew as a team and as a family and as a result, were once again very successful in our competitions. Performing to "Us" by Regina Spektor, proved to be the best winter guard season in all my 4 years, not only because of winning 1st and 2nd place in championships, but also going through ups and downs with my second family. Being part of the guard was an honor and it had taught me greater things for the future and has changed my life for the better. In addition, I would really like to thank Wendy and Peter for the awesome year and for their hard work in putting the show together. And Mr. Chang, thanks for the amazing 4 years and thank you for ALWAYS supporting the guard! Good luck next year and farewell!

**Jenny Sohn - Class of 2011
Color Guard Captain**



Hello readers!

My name is Aubrey Magalang, '11-'12 Color guard Captain and Historian. As the 10-11 year is coming to an end, we have great anticipation of the upcoming year. With a newly picked and fresh team the color guard is ready to tackle on the new season! We have already had a few rehearsals of training and conditioning the new group. And it has been remarkable on how well the new girls have picked up on the basics and new work fairly quickly for the upcoming 4th of July show. We cannot wait to have our first performance!

**Aubrey Magalang – Senior
Color Guard Captain**

Royal Wilson Marching Alliance

Definition of Terms

The Royal Wilson Marching Alliance – RWMA: This is an alliance of the marching band and color guard that comes together to perform at various events and to compete in Southern California field show tournaments and parades. The Director of the RWMA is Mr. Jonathan Chang.

WIM Club, Inc.: The Wilson Instrumental Music Club, Inc. is the **parent** booster organization charged with the fundraising activities and assisting in deploying the marching band and color guard of Glen A. Wilson High School at all performances. All parents of band and color guard students are members of the organization and are asked to participate in the events of both the RWMA and WIM Club.

Glen A. Wilson Marching Band: This is the actual band, which will number approximately 105 students this year. Students participate in the band for class credit. The marching unit performs at parades and band tournament competitions throughout Southern California and sometimes throughout the state. Field show competitions occur on Saturdays during the fall semester each year. The band will perform during the second semester on an occasional basis. During the second semester, the students are divided between several different musical performing groups; Wind Ensemble, Concert Band, Jazz Band, and Drumline.

Color Guard: The color guard was originally organized to carry the “Wilson” sign for the band in parades. The unit has evolved into a performing unit in its own right and complements the band at field show competitions. The color guard also competes all year, with indoor competitions during the second semester of the school year. The color guard is part of the RWMA, with a paid professional instructor reporting to the Band Director, who is assisted by the Vice President – Color Guard. This elected parent officer represents the color guard on the WIM Club Board of Directors

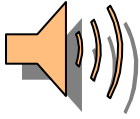
Band Council: This is the student leadership group for the Royal Wilson Marching Alliance. There are members from both the band and color guard on the Band Council. It mirrors the parent booster organization, the WIM Club, with respect to fundraising and assisting the Band Director in implementing Alliance policies and leading the RWMA.

Golden State Field Classic – GSFC: The RWMA hosts its own adjudicated band tournament in the Fall of each year. This year it will be held on the fourth Saturday in October. The GSFC organization is a stand alone organization that is responsible for the planning, operating, and financials for the event. It reports to the WIM Club Board of Directors. The organization has its own treasurer and committee chairpersons drawn from the WIM Club. Parent volunteers manage concessions, parking, facilities, etc. The GSFC hosts between 25 and 30 bands and approximately 10,000 people during the day long band competition. It is mandatory that each student of the RWMA work the GSFC the entire day and one parent of each student work a minimum of one shift that day. This is the WIM Club’s largest fundraising event of the year. We manage to raise the majority of the funds needed for the year through it.

Southern California School Band & Orchestra Association – SCSBOA: This is usually referred to as the “SCSBOA”. This is the organization that governs the field show competitions and supplies the judges for the field show competitions in Southern California. They also sponsor a Championship Field Show Tournament at the end of the season featuring the top ten bands in each class.

District Festival: The District Festival is held during the second semester of the school year, usually in March. This is the spring evaluation of the Wind Ensemble and Concert Band. The Marching Band is divided into these two band organizations for the second semester. It occurs on a weekday and runs from approximately 8:30 AM to 9:00 PM. It involves approximately 24 bands and 2,000 students. All the bands from the four high schools and all the middle school bands in the school district participate. Some bands from outside of the school district participate on occasion. Every four years, Wilson High School is required to host this adjudicated district band festival. When we host this event, it requires WIM Club participation and support. Each of the four high schools in the district rotates the hosting of the District Festival. The other host high schools are Los Altos, La Puente, and Workman. Wilson will host the festival in the spring of 2011.

Area Concert: This is a joint concert held in the Spring each year in the Wilson High School Gym. It consists of the performing bands from the two middle schools that are associated with Wilson High School; Cedarlane, Mesa Robles and the elementary schools in the quadrant as well. The RWMA also performs at this concert and it is used as a “recruiting” tool for both students and parents to get involved in the instrumental music program at Wilson High School.



The Sound Board, cont.



Greetings to everybody!

I'm Bianca Hizon and I am really excited about the opportunity to serve you guys as the council president this year. We're starting off with our council workday on June 16th, the last day of school and we will be working throughout the summer in different leadership seminars. I am really looking forward to creating exciting events that are not just fun for everybody but made to generate funds. I plan to work really closely with everyone in order to increase member participation not only with the group, but other Wilson students as well. It is going to be challenging but I will do everything I can to make it one of the best years in RWMA history. (Who else can say that they

were in colorguard and were council president)? My plans for this year also include having more ads in GSFC, more "out-of-the-box" fundraisers," and a lot of activities for our members, including parents.

I am looking forward to seeing everybody at our upcoming summer fundraisers at Round Table on June 23rd and at Chipotle on July 7th, and of course our performance at the 4th of July parade.

Sincerely,

**Bianca Beatrice D. Hizon - Senior
Alliance Council President**



It is a bittersweet moment for seniors right now as we finish up with a successful year in the RWMA. The car wash was the last official RWMA event for us and we were all fairly excited to see ourselves moving on to graduate, and ultimately hearing the band play Pomp and Circumstance for us the way we had to for three years before. All of the new council members are also getting settled in with their new jobs, and we are all proud of them for making it in. Now, we just wait and see for what kind of things they bring in the upcoming year. I would personally like to congratulate Bianca and Michael as they will be taking on the positions of President and Drum Major respectively. I am

sure they will do a fine job leading the RWMA next year and I anticipate hearing many great things about them. Congratulations seniors and good luck to everyone in the RWMA, you will all do well.

**Tyler Greenup - Class of 2011
Alliance Council President & Percussion Section Leader**

What is Shared Cost and why is it necessary?

Shared Cost is the amount of money each student helps raise to ensure that the RWMA program sustains operating at the level of excellence it is historically known for. Shared Cost is structured to ensure that all students contribute to the fundraising efforts of the group. These funds are necessary to pay for specialized instructors, transportation including rental vehicles to move equipment to each field show competition, entry fees for the competitions, new instruments, color guard equipment, props, uniforms, repair and maintenance of existing instruments and equipment, and food for the students on the competition days. The funds provided by the school district do not come close to covering all these expenses, especially for a group of about 100 students. This year, we estimate that in addition to the Shared Cost that is collected, the WIM Club will have to raise approximately \$40,000 through fundraisers to meet these expenses. Without the Shared Cost program, we would not be able to have the desirable program we would like our students to participate in. Shared Cost for the year is **\$375** for each student. Payments may be made in a lump sum or in installments.

The payment schedule for Band students is:

First Installment:	June 23	\$100
Second Installment:	August 9	\$100
Third Installment:	October 3	\$100
Final Installment:	November 1	remaining balance

The payment schedule for Color Guard is:

First Installment:	May 24	\$200
Second Installment:	July 5	\$100
Third Installment:	July 21	\$100
Fourth Installment:	August 9	\$100
Final Installment:	October 3	remaining balance

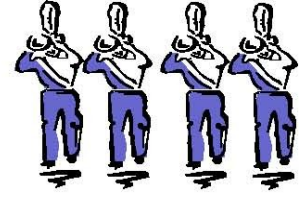
Instead of making payments, students can fund their Shared Cost through fundraising. Fundraising events are scheduled throughout the year. Most offer individual students the opportunity to raise funds to offset their Shared Cost payments. One ongoing program that runs throughout the year is the scrip program. You can purchase scrip for many stores, restaurants, and other services in the area. A percentage of the face value of the scrip will go to your student's shared cost account. Purchasing scrip is a very easy and quick way to raise funds.

The Golden State Field Classic (GSFC) is the WIM Club's major fund raising event of the year. This single event brings in the most funds to offset the \$40,000 we need to raise. All RWMA members are responsible for selling advertisements for the GSFC Program. Students have already received information about selling these ads. Students are expected to obtain at least \$50 in advertisements. Beyond the \$50, students will be credited for half of their sales. This is an excellent way of raising funds to offset the Shared Cost payments. Ads are due on September 22.

Finally, Mr. Chang is the administrator for all of the students' shared cost accounts. Any questions you may have about the balance in your account should be directed to him. If you have any financial constraints or questions, please bring the matter to Mr. Chang's attention immediately and he will work with you.



RWMA – Royal Wilson Marching Alliance



Questions & Answers for Parents of Incoming Freshmen

Q: What is the Royal Wilson Marching Alliance?

A: This is the group which performs at football game halftime shows, parades, field show competitions, and pep rallies. It includes the Band and Color Guard (Tall Flags). First semester concentrates on Marching Band while second semester concentrates on Concert Band. There are other optional performance groups that include Wind Ensemble, Jazz Band, Spring Drumline/Percussion Ensemble, and Chamber Music. To participate in band, you should be enrolled for the entire year.

Q: Who may join the band?

A: Anyone who is interested!

Q: What are the benefits of being in band?

A: Before school even starts, your child will become networked with friends from all grade levels. The friends they make in band are often the friends they are with outside of band. Academically, they become a well-rounded student that colleges look for when it is time for them to apply for college. Studies indicate that students in a music program perform academically higher than other students. They also learn teamwork and time management skills that will be very useful in college and in their careers. Finally, they become a part of a family. As a part of a family, they will create experiences they will treasure for the rest of their life.

Q: What are the requirements to join the band?

A: Most importantly, they must have a good attitude and self-discipline to be in band. Working as a big team can be a large task, but if everyone has the right attitude and is willing to work, wonderful things can happen. There is also a financial responsibility they must fulfill (see next question).

Q: What are the expenses involved in being in the band?

A: There are a couple of things they need to purchase that are part of their marching uniform. One item that hopefully they will not need to purchase year after year is shoes (approximately \$30). They will also need to purchase gloves, which are also part of their uniform (approximately \$1.50 a pair). Depending on how well they take care of their gloves will depend on how many pair they will need to purchase. They also will have to pay half the cost (\$7-\$9) for a shirt to be worn in the 4th of July Parade. They can use the same shirt in future years. Besides these, there are many expenses that the band incurs that necessitate fund raising. The average amount needed to meet our financial goals is \$375 per student. They are expected to raise this amount by participating in fundraisers throughout the school year. A schedule of all the fundraisers for the school year will be established before the beginning of school. If their combined profits from all their fundraising activities meet the \$375 shared cost requirement, there is no need to make any monetary contributions to the band. However, should they choose not to participate in fundraising or meet the expectations for fundraising for the year, they will have to make a payment for the balance of what they were expected to raise. The purpose of this type of program is not to put a financial burden on you or your family, but to ensure that everyone contributes to the general welfare of the Royal Wilson Marching Alliance. This is not to say, if they do not participate in fundraising that they are not a contributor. Some families choose simply to make a payment for the full amount and not participate in fundraising at all. It is your choice.

If trips are planned, there are additional costs. The band has recently performed in Fairfield, California, San Antonio, Texas, Orlando, Florida, and Honolulu, Hawaii.

Q: As an incoming freshman in the band, what special preparations do students need to make?

A: As a freshman, they should be enrolled in band for summer school. This class does not conflict with the rest of the regularly scheduled academic classes. The band class is generally in the afternoon from 1:00 -3:30PM with one or two evening rehearsals each week. A schedule will be available prior to the end of school. For the fall, you should be signed up for both Varsity Band and Marching Band PE. You receive fine arts credit for Varsity Band and PE credit for Marching Band PE. Even if you are involved in a fall sport, you should be enrolled in Marching Band PE.

Q: What is taught in band summer school?

A: Students will learn how to march individually and in a group, play and march at the same time, read marching and maneuvering charts, memorize scales, and play the music used for our competitive field show as well as music used at football games. This opportunity allows new students to learn the fundamentals of marching and playing necessary to perform with returning members of the band at Band Camp. Preparations are also made to perform in the Hacienda Heights 4th of July Parade.

Q: What if my child cannot attend all of band summer school?

A: They should come as often as they can. If they come part-time, we can more than likely teach them all that is necessary to be ready for band camp. However, they will not earn full credit. They should attend what classes they can, even if they cannot attend all six weeks. If they are unable to participate in this summer class, they should contact Mr. Chang and arrangements can be made for them to stay up-to-date with what is being taught so that they do not fall behind and may participate in the fall.

Q: What is Band Camp?

A: This is a camp held on campus 2 weeks before school begins, where all of the members of the *RWMA* prepare for the beginning of the fall competition season. They will learn the pre-game and halftime shows. They should know their 12 major scales, chromatic scale, and a prepared piece which will be given to them on the first day of band camp. This is a required camp. If they are unable to participate in any part of band camp, they must notify Mr. Chang as soon as possible. This year's band camp schedule is as follows:

August 9 - 12: 12:00 - 4:00 PM and 5:00 - 9:00 PM

August 15 - 19: 12:00 - 4:00 PM and 5:00 - 9:00 PM

Q: How much extra time does band take?

A: During the fall, there are evening rehearsals traditionally on Tuesdays and Thursdays from 6:00 PM to 9:00 PM. They will receive PE credit for these rehearsals. Then there are performances. The band performs at home football games (4 to 5 Friday evenings; away football games have traditionally been optional), field show tournaments (5 to 6 Saturdays), and concerts. The fall semester is the busiest time of the year, especially October through the end of November. The spring semester is lighter, with only sporadic evening rehearsals and concerts taking up out-of-class time. There are other musical opportunities that they may choose, that may increase the amount of extra time they spend on music, such as Jazz Band, Spring Drumline, and Chamber Music. These groups are optional and require an audition.

Q: Can my child also be on an athletic team such as football or other activities and still be in *RWMA*?

A: Yes. The coaches and advisors are very cooperative at Wilson High School and we are willing to share a student who is interested in more than one activity.

Q: What other things can the student do to prepare for band?

A: One of the best ways for them to improve their musical skills is through individual practice and private lessons. Ask Mr. Chang how to practice, what to practice, or where to find a private instructor. There is a proper and improper way to practice. If they do not practice properly, they are simply wasting time.

Q: What can I do to support my child in the band?

A: A lot of adult help is needed to move the band to a performance, such as checking in and out uniforms, chaperoning on the busses, assisting in feeding the kids before or after a performance, and transporting the large instruments. The WIM Club (Wilson Instrumental Music Club) is the organization of adults that provides that support and anything Mr. Chang may need. As much time as you can give will be greatly appreciated. We need people's help for each performance; each halftime show, band competition, etc. Your participation will not only assist in the performance of the band, but it also will demonstrate your support and interest in your child. It is very rewarding and fun at the same time! To volunteer, see one of the WIM Club Board of Directors or just show up when you drop off your child for a performance.

Congratulations to the RWMA Class of 2011!

Nicholas Alba

Sylvia Bang

Andrew Ceja

Jorge Estrella

Tyler Greenup

Lena Kil

Cheryl Lam

Nikko Lowe

Liliane Ly

Anthony Mora

Sean Oh

Karen Ornelas



Claudia Rodriguez

Jenny Sohn

Amanda Van Gerpen

Leslie Ventura

Eric Wang

Wilson Wang

Ariel Wong

This year, we have several RWMA members marching in drum corps this year. We wish the best to the following as they perform across the country this summer.

Anthony Mora
Class of 2011

Mellophone – Impulse (Buena Park, CA)

Josh Scrivens

Class of 2010 & Current Percussion Instructor
Snare – Pacific Crest (Diamond Bar, CA)

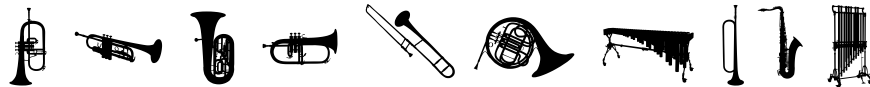
WIM Club Board

2011—2012

President	Open
Vice President –Ways & Means	Edward Fierro
Vice President –Color guard	Open
Secretary	Cindy Greenup
Treasurer	Helena Wong
Member-At-Large	Blanca Garza
Member-At-Large	Candace Reeley

RWMA Staff Members

Director	Jonathan Chang
Color Guard Advisor	Peter Gomez
Color Guard Assistant	Wendy Lomeli
Percussion Advisor	Pete Sapadin
Percussion Assistants	Lacey Jung
	Jon Eichhorn
	Josh Scrivens
Wind & Marching Instructor	Ken Mengel



ROYAL WILSON MARCHING ALLIANCE

G l e n A . W i l s o n H i g h S c h o o l

June 2011

Dear Friend of the Royal Wilson Marching Alliance:

The Royal Wilson Marching Alliance is asking for your help in securing funds to support their music and color guard program. The RWMA is the band and color guard unit from Glen A. Wilson High School in Hacienda Heights, California and consists of 90+ students. Contributions from organizations and individuals outside the high school help defray the cost of new instruments, color guard equipment, maintenance of the uniforms, transportation to tournaments and other items that are necessary to run a successful band program. These funds are essential to support the limited resources that are currently available through the school district. With additional revenue sources, we are able to provide a safe, quality band and color guard program for our students at Wilson High School.

Your generous monetary contribution will go directly to the RWMA and is tax-deductible. Our tax ID # is 23-7008907. For your convenience we have enclosed a self-addressed envelope to assist you in quickly and easily returning your donation. Please keep the top portion of this form for your tax records and return the bottom half, indicating your level of support.

Thank you in advance for your generosity and support!

The Royal Wilson Marching Alliance

Yes! I want to support the Royal Wilson Marching Alliance!

Please accept my donation in the amount of:

\$ ___ Other ___ \$25 ___ \$50 ___ \$100 ___ \$150 ___ \$250 \$ ___ Other

Please make checks payable to the WIM Club.
Thank you for making our fundraising efforts a success!

Amount Enclosed: \$ _____ Check # _____

Name: _____

Address: _____

Phone: _____

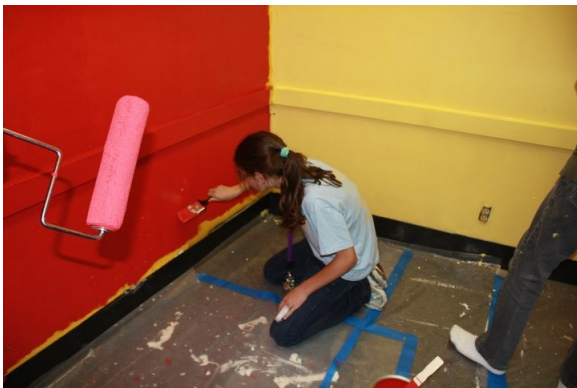
Email: _____

RWMA member: _____

PO Box 92936 • City of Industry, CA 91715 • 626-934-4572

Band Room and Drum Room Renovation

As part of his Eagle Scout project, Tyler Greenup recently renovated the Drum Room by building new cabinets for percussion equipment. Thank you, Tyler!



A big 'Thank You!' to all the volunteers who helped with the band room renovation project!